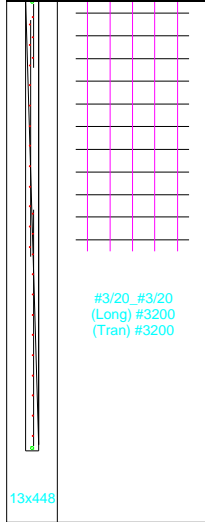


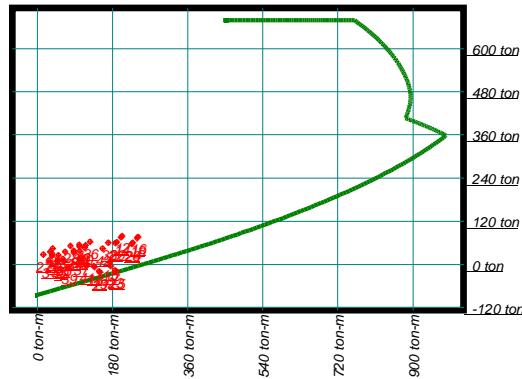
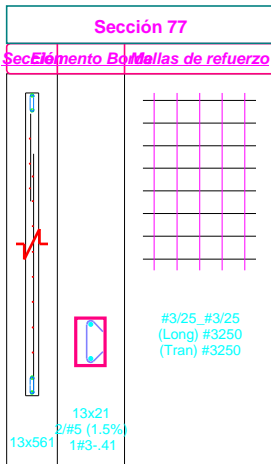
**Pantalla P26 (Vanos 1 a 1) F'c= 21Mpa**

Cortante de Diseño = 49.9 ton En el vano 1 Combinación 16 [vu=1.10Mpa Øvc=0.95Mpa Øvs=0.89Mpa]  
 Esfuerzo flexión=3.83Mpa En el vano 1 Combinación 16 [Momento =141.9 ton-m Axial =26.5 ton C=0.00m]



**Pantalla P25 (Vanos 1 a 1) F'c= 21Mpa**

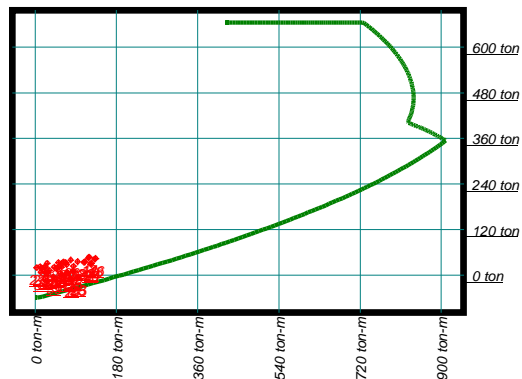
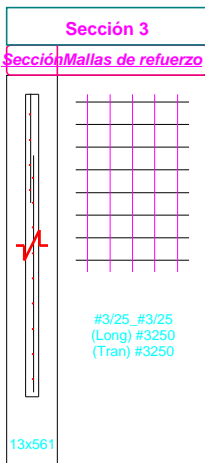
Cortante de Diseño = 43.9 ton En el vano 1 Combinación 25 [vu=0.78Mpa Øvc=0.81Mpa Øvs=0.71Mpa]  
 Esfuerzo flexión=4.72Mpa En el vano 1 Combinación 16 [Momento =241.4 ton-m Axial =76.2 ton C=0.68m]



N	Mu	Pu	C
1	30.5	35.7	0.5
2	36.6	44.6	0.5
3	35.4	24.1	0.4
4	100.8	54.5	0.6
5	50.4	25.1	0.4
6	115.8	53.5	0.6
7	48.5	7.7	0.3
8	87.7	38.1	0.5
9	63.5	8.7	0.3
10	102.7	37.1	0.5
11	135.1	-4.6	0.3
12	203.1	78.7	0.7
13	137.7	-6.9	0.3
14	200.5	75.6	0.7
15	173.4	5.5	0.3

**Pantalla P25 (Vanos 2 a 2) F'c= 21Mpa**

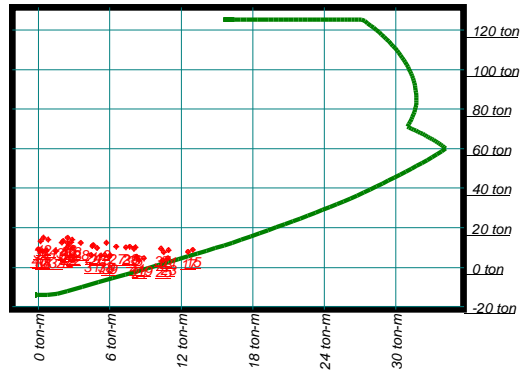
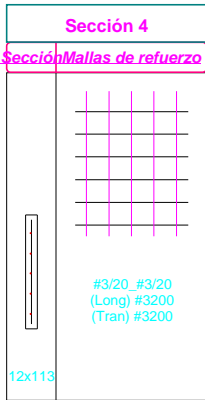
Cortante de Diseño = 4 ton En el vano 2 Combinación 2 [vu=0.01Mpa Øvc=0.21Mpa Øvs=0.71Mpa]  
 Esfuerzo flexión=2.64Mpa En el vano 2 Combinación 16 [Momento =134.1 ton-m Axial =43.7 ton C=0.51m]



N	Mu	Pu	C
1	22.9	22.3	0.4
2	26.7	30.8	0.5
3	14.2	18.3	0.4
4	62.3	34.5	0.5
5	19.7	19.8	0.4
6	67.8	33.0	0.5
7	23.5	6.2	0.3
8	53.0	22.4	0.4
9	29.0	7.7	0.3
10	58.4	20.9	0.4
11	70.1	7.1	0.3
12	120.1	47.6	0.5
13	72.0	5.2	0.3
14	118.2	45.7	0.5
15	84.0	11.0	0.4

**Pantalla P51 (Vanos 1 a 1) F'c= 21Mpa**

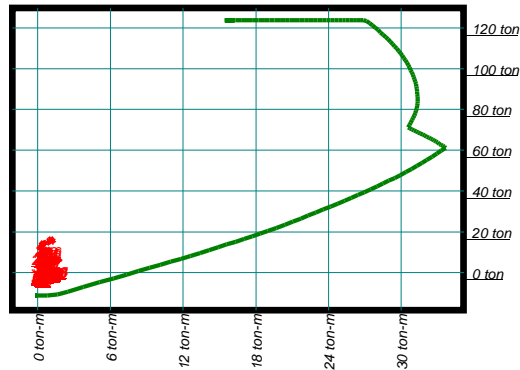
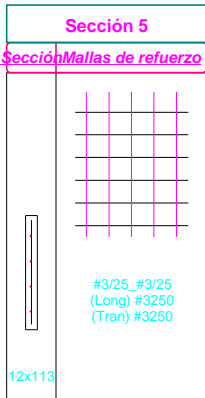
Cortante de Diseño =6.5 ton En el vano 1 Combinación 15 [vu=0.58Mpa Øvc=0.98Mpa Øvs=0.90Mpa]  
 Esfuerzo flexión=5.50Mpa En el vano 1 Combinación 15 [Momento =13.0 ton-m Axial =8.8 ton C=0.12m]



N	Mu	Pu	C
1	4.6	11.3	0.1
2	5.7	12.4	0.1
3	7.4	10.1	0.1
4	2.8	12.7	0.1
5	8.1	10.2	0.1
6	2.0	12.6	0.1
7	5.3	6.0	0.1
8	0.7	8.5	0.1
9	6.1	6.0	0.1
10	0.1	8.5	0.1
11	10.9	8.7	0.1
12	0.4	15.1	0.2
13	10.5	7.8	0.1
14	0.8	14.1	0.2
15	13.0	8.8	0.1

**Pantalla P51 (Vanos 2 a 3) F'c= 21Mpa**

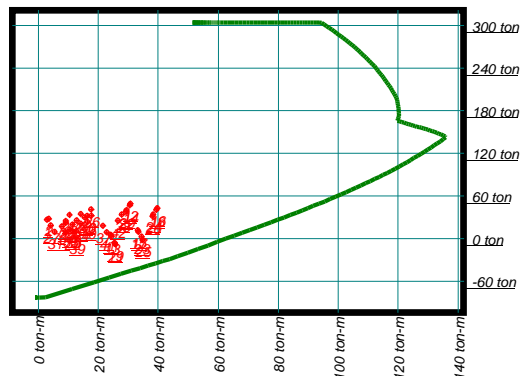
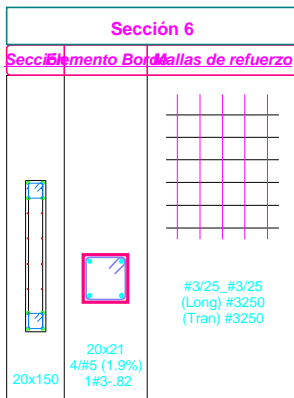
Cortante de Diseño =0 ton En el vano 3 Combinación 32 [vu=0.00Mpa Øvc=0.18Mpa Øvs=0.72Mpa]  
 Esfuerzo flexión=1.61Mpa En el vano 2 Combinación 16 [Momento =1.2 ton-m Axial =16.3 ton C=0.15m]



N	Mu	Pu	C
1	0.3	12.4	0.1
2	0.3	14.4	0.1
3	0.2	11.9	0.1
4	0.5	14.1	0.1
5	0.3	11.9	0.1
6	0.6	14.1	0.1
7	0.5	6.9	0.1
8	0.2	9.0	0.1
9	0.6	6.8	0.1
10	0.3	9.1	0.1
11	0.8	10.8	0.1
12	1.0	16.2	0.1
13	0.7	9.7	0.1
14	1.0	15.1	0.1
15	1.0	10.7	0.1

**Pantalla P52 (Vanos 1 a 1) F'c= 21Mpa**

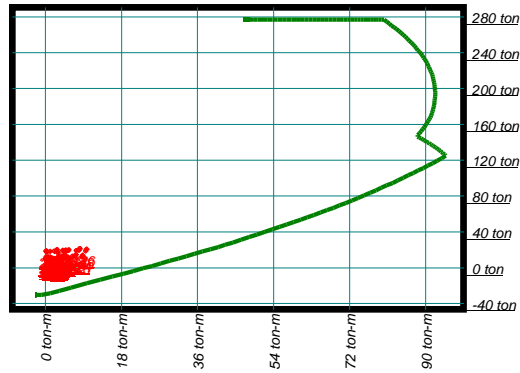
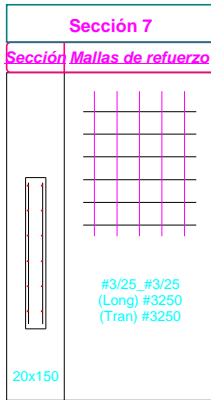
Cortante de Diseño =10.5 ton En el vano 1 Combinación 25 [vu=0.44Mpa Øvc=0.85Mpa Øvs=0.89Mpa]  
 Esfuerzo flexión=6.71Mpa En el vano 1 Combinación 16 [Momento =39.7 ton-m Axial =42.6 ton C=0.25m]



N	Mu	Pu	C
1	2.9	26.5	0.2
2	3.6	27.8	0.2
3	7.9	17.1	0.2
4	14.2	34.6	0.2
5	11.4	19.6	0.2
6	17.7	32.2	0.2
7	9.2	8.3	0.2
8	12.9	25.8	0.2
9	12.7	10.8	0.2
10	16.4	23.3	0.2
11	24.2	5.2	0.2
12	30.7	48.9	0.3
13	24.4	2.9	0.2
14	30.5	46.6	0.3
15	33.2	11.5	0.2

**Pantalla P52 (Vanos 2 a 3) F'c= 21Mpa**

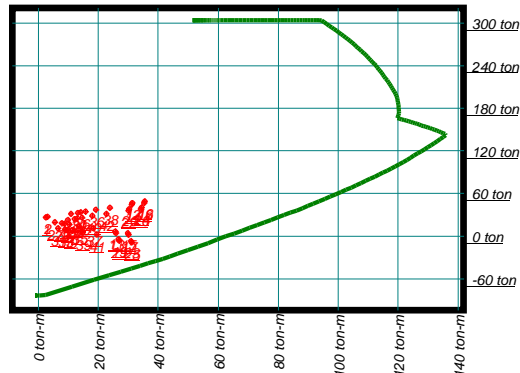
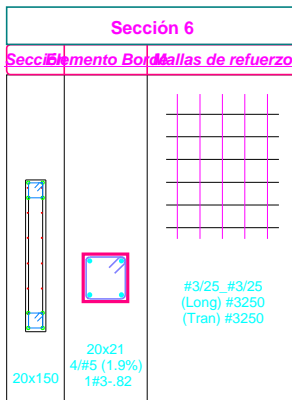
Cortante de Diseño =0 ton En el vano 2 Combinación 35 [vu=0.00Mpa Øvc=0.18Mpa Øvs=0.89Mpa]  
 Esfuerzo flexión=2.00Mpa En el vano 2 Combinación 16 [Momento =9.9 ton-m Axial =20.7 ton C=0.16m]



N	Mu	Pu	C
1	2.7	19.1	0.1
2	2.8	20.4	0.1
3	0.4	18.2	0.1
4	4.8	19.5	0.1
5	0.2	18.5	0.1
6	5.5	19.3	0.1
7	0.5	11.6	0.1
8	3.9	12.9	0.1
9	1.1	11.9	0.1
10	4.6	12.7	0.1
11	2.8	18.0	0.1
12	8.3	21.3	0.2
13	3.0	16.4	0.1
14	8.0	19.7	0.1
15	4.4	18.7	0.1

**Pantalla P53 (Vanos 1 a 1) F'c= 21Mpa**

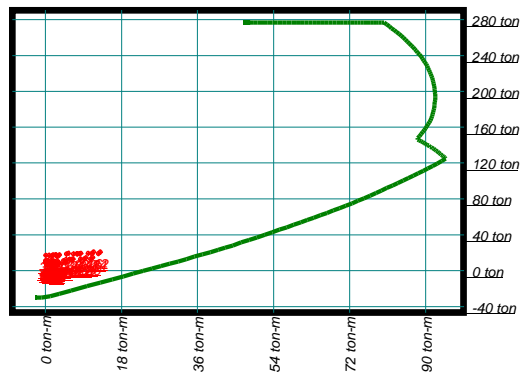
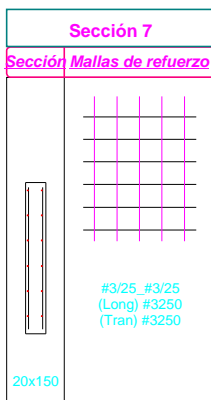
Cortante de Diseño =9.9 ton En el vano 1 Combinación 25 [vu=0.41Mpa Øvc=0.80Mpa Øvs=0.89Mpa]  
 Esfuerzo flexión=6.37Mpa En el vano 1 Combinación 16 [Momento =35.5 ton-m Axial =49.1 ton C=0.28m]



N	Mu	Pu	C
1	2.5	26.3	0.2
2	3.1	27.3	0.2
3	8.8	17.5	0.2
4	14.2	33.6	0.2
5	10.4	16.5	0.2
6	15.8	34.5	0.2
7	9.9	8.9	0.2
8	13.1	25.0	0.2
9	11.5	7.9	0.2
10	14.7	25.9	0.2
11	25.7	6.7	0.2
12	31.4	46.6	0.3
13	25.9	4.4	0.2
14	31.2	44.4	0.3
15	29.9	4.2	0.2

**Pantalla P53 (Vanos 2 a 3) F'c= 21Mpa**

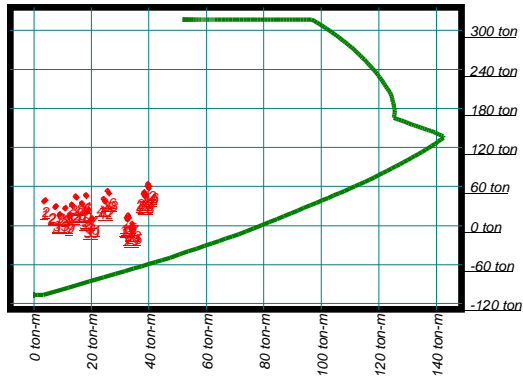
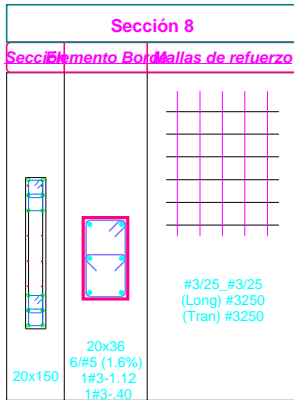
Cortante de Diseño =0 ton En el vano 2 Combinación 15 [vu=0.00Mpa Øvc=0.17Mpa Øvs=0.89Mpa]  
 Esfuerzo flexión=2.43Mpa En el vano 2 Combinación 12 [Momento =13.0 ton-m Axial =20.7 ton C=0.15m]



N	Mu	Pu	C
1	5.0	18.5	0.1
2	5.5	19.5	0.1
3	1.9	17.4	0.1
4	8.2	18.8	0.1
5	2.5	17.4	0.1
6	7.5	18.8	0.1
7	0.1	11.2	0.1
8	6.3	12.6	0.1
9	0.7	11.2	0.1
10	5.7	12.6	0.1
11	2.5	17.1	0.1
12	13.0	20.7	0.1
13	3.0	15.5	0.1
14	12.6	19.1	0.1
15	0.9	17.2	0.1

### Pantalla P54 (Vanos 1 a 1) F'c= 21Mpa

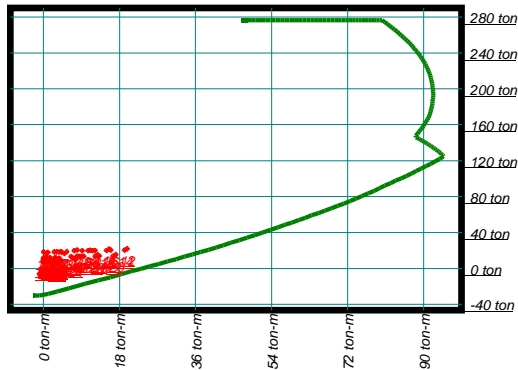
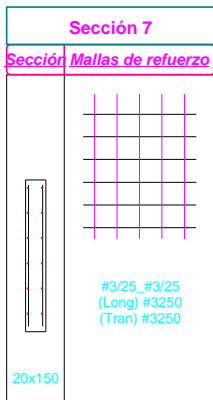
Cortante de Diseño =10.8 ton En el vano 1 Combinación 25 [vu=0.45Mpa Øvc=0.84Mpa Øvs=0.89Mpa]  
 Esfuerzo flexión=7.43Mpa En el vano 1 Combinación 12 [Momento =39.8 ton-m Axial =63.7 ton C=0.36m]



N	Mu	Pu	C
1	3.4	37.0	0.3
2	4.0	38.9	0.3
3	10.8	25.8	0.3
4	18.1	46.6	0.3
5	11.0	27.2	0.3
6	18.3	45.2	0.3
7	12.2	13.4	0.2
8	16.7	34.1	0.2
9	12.5	14.8	0.2
10	16.9	32.8	0.3
11	32.2	11.9	0.2
12	39.8	63.7	0.4
13	32.5	8.7	0.2
14	39.5	60.5	0.4
15	32.8	15.4	0.2

### Pantalla P54 (Vanos 2 a 3) F'c= 21Mpa

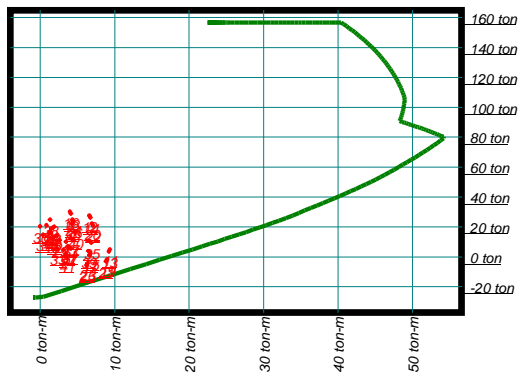
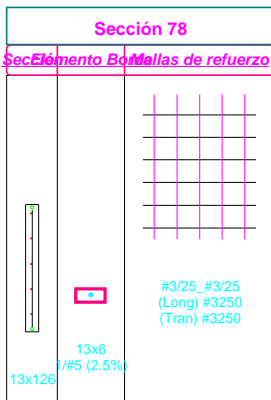
Cortante de Diseño =1 ton En el vano 2 Combinación 17 [vu=0.00Mpa Øvc=0.18Mpa Øvs=0.89Mpa]  
 Esfuerzo flexión=3.37Mpa En el vano 2 Combinación 12 [Momento =19.9 ton-m Axial =21.8 ton C=0.16m]



N	Mu	Pu	C
1	7.4	19.6	0.1
2	8.1	20.4	0.1
3	2.6	18.3	0.1
4	12.3	19.8	0.1
5	4.3	18.4	0.1
6	10.6	19.7	0.1
7	0.1	11.8	0.1
8	9.6	13.4	0.1
9	1.6	11.9	0.1
10	7.9	13.2	0.1
11	4.4	18.0	0.1
12	19.9	21.8	0.2
13	5.0	16.3	0.1
14	19.2	20.1	0.1
15	0.1	18.3	0.1

### Pantalla P55 (Vanos 1 a 1) F'c= 21Mpa

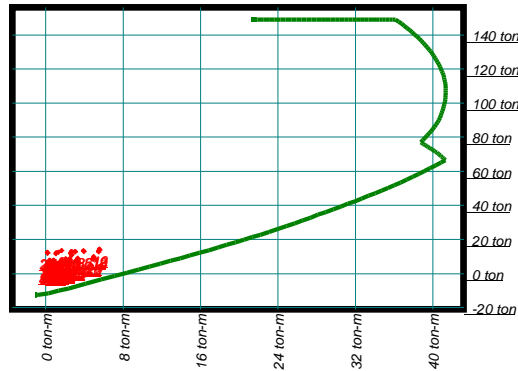
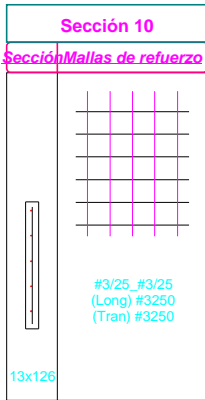
Cortante de Diseño =4.2 ton En el vano 1 Combinación 21 [vu=0.33Mpa Øvc=0.82Mpa Øvs=0.71Mpa]  
 Esfuerzo flexión=3.71Mpa En el vano 1 Combinación 12 [Momento =6.6 ton-m Axial =27.6 ton C=0.19m]



N	Mu	Pu	C
1	1.5	15.9	0.1
2	1.3	16.8	0.1
3	4.5	11.1	0.1
4	1.9	20.2	0.2
5	3.5	10.0	0.1
6	0.9	21.2	0.2
7	4.1	5.6	0.1
8	2.3	14.8	0.1
9	3.1	4.6	0.1
10	1.2	15.8	0.1
11	9.3	4.9	0.1
12	6.6	27.6	0.2
13	9.2	3.6	0.1
14	6.7	26.3	0.2
15	6.7	2.4	0.1

**Pantalla P55 (Vanos 2 a 3) F'c= 21Mpa**

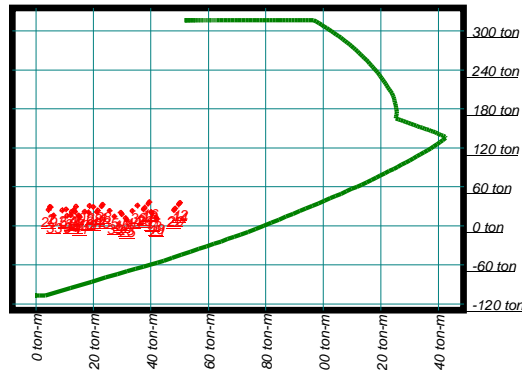
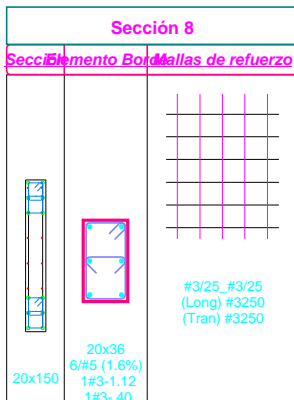
Cortante de Diseño = 0 ton En el vano 3 Combinación 11 [vu=0.00Mpa Øvc=0.17Mpa Øvs=0.71Mpa]  
 Esfuerzo flexión=2.56Mpa En el vano 2 Combinación 16 [Momento =5.6 ton-m Axial =14.3 ton C=0.13m]



N	Mu	Pu	C
1	1.3	12.6	0.1
2	1.6	13.5	0.1
3	0.2	12.2	0.1
4	3.1	12.8	0.1
5	0.2	12.0	0.1
6	3.1	13.0	0.1
7	0.8	7.8	0.1
8	2.5	8.4	0.1
9	0.8	7.6	0.1
10	2.5	8.6	0.1
11	2.6	12.3	0.1
12	5.6	13.8	0.1
13	2.7	11.2	0.1
14	5.5	12.8	0.1
15	2.6	11.8	0.1

**Pantalla P56 (Vanos 1 a 1) F'c= 21Mpa**

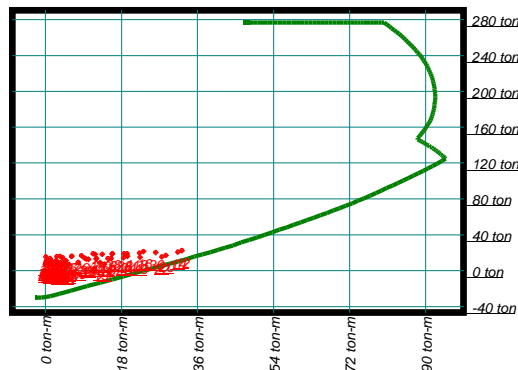
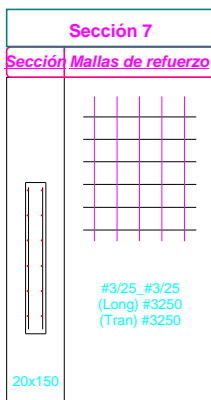
Cortante de Diseño =12.4 ton En el vano 1 Combinación 21 [vu=0.52Mpa Øvc=0.92Mpa Øvs=0.89Mpa]  
 Esfuerzo flexión=7.87Mpa En el vano 1 Combinación 12 [Momento =50.1 ton-m Axial =35.5 ton C=0.29m]



N	Mu	Pu	C
1	4.8	29.0	0.3
2	5.2	28.6	0.3
3	13.3	24.4	0.3
4	22.9	30.0	0.3
5	9.1	24.0	0.3
6	18.7	30.5	0.3
7	15.0	15.9	0.2
8	21.2	21.5	0.3
9	10.8	15.4	0.2
10	17.0	21.9	0.3
11	40.1	21.5	0.3
12	50.1	35.5	0.3
13	40.5	19.0	0.3
14	49.7	33.0	0.3
15	29.5	20.4	0.3

**Pantalla P56 (Vanos 2 a 3) F'c= 21Mpa**

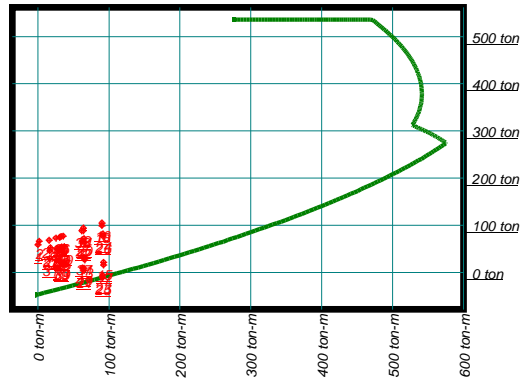
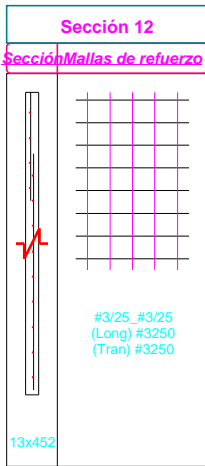
Cortante de Diseño =11.7 ton En el vano 2 Combinación 12 [vu=0.49Mpa Øvc=1.00Mpa Øvs=0.89Mpa]  
 Esfuerzo flexión=5.06Mpa En el vano 2 Combinación 12 [Momento =32.4 ton-m Axial =22.3 ton C=0.16m]



N	Mu	Pu	C
1	11.3	18.8	0.1
2	11.9	18.2	0.1
3	2.8	15.8	0.1
4	19.4	19.1	0.1
5	6.3	16.2	0.1
6	15.8	18.6	0.1
7	1.0	10.5	0.1
8	15.6	13.7	0.1
9	2.5	10.9	0.1
10	12.0	13.3	0.1
11	9.3	14.1	0.1
12	32.4	22.3	0.2
13	10.2	12.5	0.1
14	31.4	20.7	0.2
15	6.2	15.2	0.1

**Pantalla P20 (Vanos 1 a 1) F'c= 21Mpa**

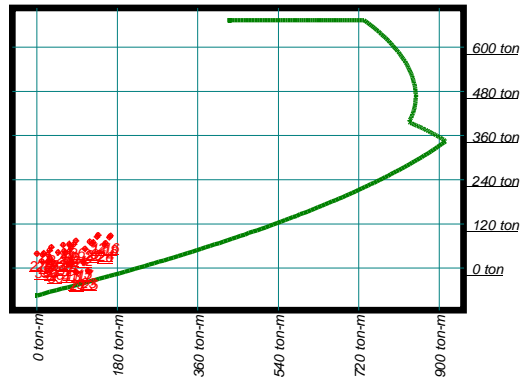
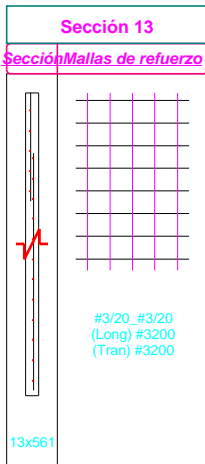
Cortante de Diseño =28.8 ton En el vano 1 Combinación 25 [vu=0.63Mpa Øvc=0.82Mpa Øvs=0.71Mpa]  
 Esfuerzo flexión=3.94Mpa En el vano 1 Combinación 16 [Momento =90.4 ton-m Axial =104.5 ton C=0.75m]



N	Mu	Pu	C
1	0.1	58.8	0.5
2	1.6	66.3	0.6
3	27.3	47.8	0.5
4	25.3	72.8	0.6
5	37.5	43.6	0.5
6	35.6	77.0	0.6
7	26.2	25.3	0.4
8	26.4	50.3	0.5
9	36.5	21.1	0.3
10	36.6	54.5	0.5
11	66.2	31.9	0.4
12	64.2	93.8	0.7
13	66.2	26.9	0.4
14	64.2	88.8	0.7
15	92.4	21.2	0.3

**Pantalla P20 (Vanos 2 a 2) F'c= 21Mpa**

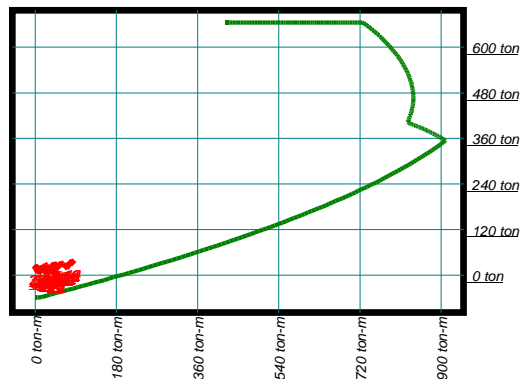
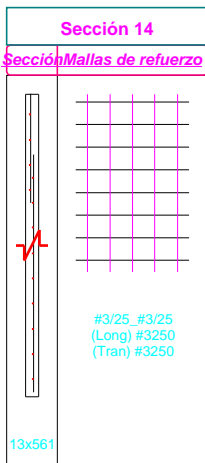
Cortante de Diseño =62.5 ton En el vano 2 Combinación 16 [vu=1.11Mpa Øvc=1.09Mpa Øvs=0.89Mpa]  
 Esfuerzo flexión=3.74Mpa En el vano 2 Combinación 16 [Momento =165.1 ton-m Axial =87.5 ton C=0.79m]



N	Mu	Pu	C
1	28.5	48.2	0.6
2	32.5	56.3	0.6
3	13.6	35.9	0.5
4	72.5	65.4	0.7
5	24.4	36.7	0.5
6	83.3	64.6	0.7
7	24.7	16.2	0.4
8	61.4	45.7	0.6
9	35.5	17.0	0.4
10	72.2	45.0	0.6
11	76.1	15.9	0.4
12	137.5	89.5	0.8
13	78.6	11.8	0.4
14	135.1	85.4	0.8
15	103.7	17.9	0.5

**Pantalla P20 (Vanos 3 a 3) F'c= 21Mpa**

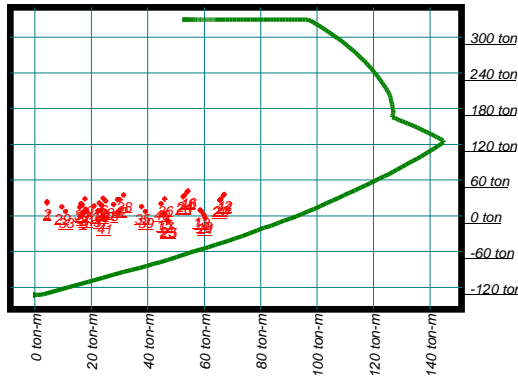
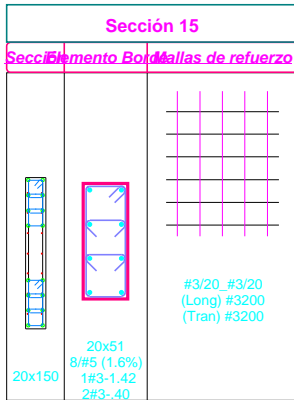
Cortante de Diseño =52.7 ton En el vano 3 Combinación 12 [vu=0.93Mpa Øvc=0.95Mpa Øvs=0.71Mpa]  
 Esfuerzo flexión=1.75Mpa En el vano 3 Combinación 12 [Momento =83.5 ton-m Axial =34.5 ton C=0.47m]



N	Mu	Pu	C
1	19.2	22.3	0.4
2	24.9	25.8	0.4
3	2.7	19.1	0.4
4	46.2	27.4	0.4
5	0.9	19.6	0.4
6	44.4	26.9	0.4
7	12.1	10.2	0.4
8	36.8	18.5	0.4
9	10.3	10.7	0.4
10	35.0	18.0	0.4
11	38.3	13.9	0.4
12	83.5	34.5	0.5
13	40.0	12.0	0.4
14	81.8	32.6	0.5
15	33.7	15.2	0.4

### Pantalla P64 (Vanos 1 a 1) F'c= 21Mpa

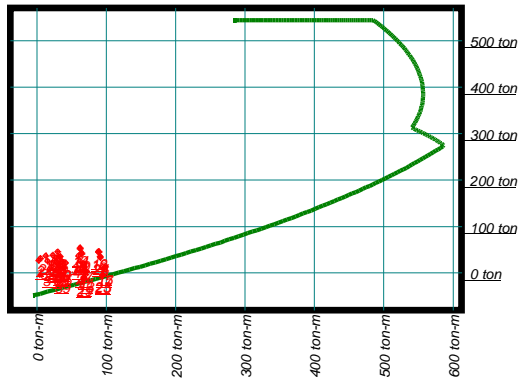
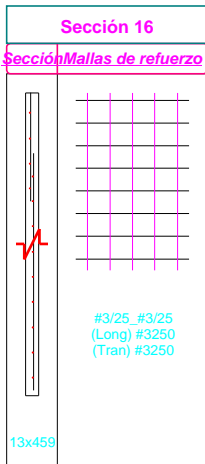
Cortante de Diseño =36.3 ton En el vano 1 Combinación 21 [vu=1.51Mpa Øvc=0.74Mpa Øvs=1.12Mpa]  
 Esfuerzo flexión=10.15Mpa En el vano 1 Combinación 12 [Momento =67.2 ton-m Axial =35.8 ton C=0.34m]



N	Mu	Pu	C
1	4.4	21.8	0.3
2	4.3	23.8	0.3
3	21.1	16.6	0.3
4	29.3	27.1	0.3
5	16.0	14.2	0.3
6	24.2	29.5	0.3
7	22.4	8.7	0.3
8	28.0	19.3	0.3
9	17.3	6.4	0.3
10	22.9	21.6	0.3
11	58.6	9.7	0.3
12	67.2	35.8	0.3
13	58.9	7.8	0.3
14	66.8	34.0	0.3
15	45.7	3.8	0.3

### Pantalla P21 (Vanos 1 a 1) F'c= 21Mpa

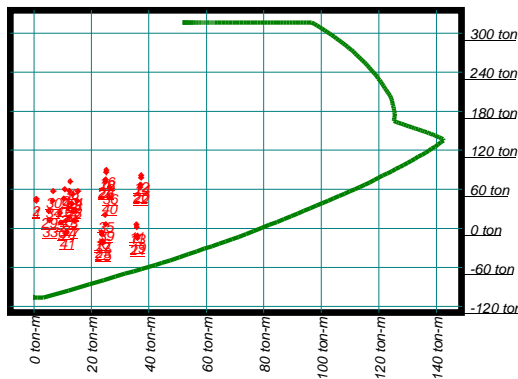
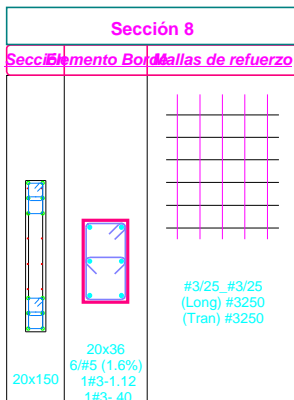
Cortante de Diseño =33.7 ton En el vano 1 Combinación 25 [vu=0.73Mpa Øvc=0.84Mpa Øvs=0.71Mpa]  
 Esfuerzo flexión=2.81Mpa En el vano 1 Combinación 16 [Momento =88.9 ton-m Axial =46.5 ton C=0.47m]



N	Mu	Pu	C
1	2.6	26.7	0.4
2	5.1	31.4	0.4
3	30.8	18.3	0.3
4	22.7	38.0	0.4
5	41.3	21.2	0.3
6	33.2	35.1	0.4
7	28.5	7.3	0.3
8	25.1	27.0	0.4
9	39.0	10.2	0.3
10	35.5	24.1	0.4
11	70.5	4.7	0.3
12	62.2	53.9	0.5
13	70.3	-3.2	0.2
14	62.4	51.7	0.5
15	97.3	12.1	0.3

### Pantalla P57 (Vanos 1 a 1) F'c= 21Mpa

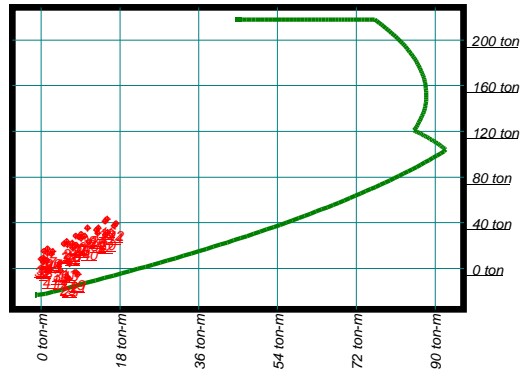
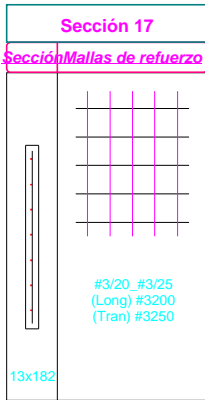
Cortante de Diseño =12.0 ton En el vano 1 Combinación 21 [vu=0.50Mpa Øvc=0.77Mpa Øvs=0.89Mpa]  
 Esfuerzo flexión=7.68Mpa En el vano 1 Combinación 12 [Momento =37.3 ton-m Axial =81.2 ton C=0.40m]



N	Mu	Pu	C
1	0.8	42.3	0.3
2	0.9	44.9	0.3
3	13.8	26.4	0.3
4	15.4	56.8	0.3
5	9.1	23.2	0.3
6	10.7	60.0	0.4
7	14.1	11.9	0.2
8	15.1	42.4	0.3
9	9.3	8.8	0.2
10	10.4	45.5	0.3
11	35.6	5.7	0.2
12	37.3	81.2	0.4
13	35.7	2.0	0.2
14	37.3	77.6	0.4
15	23.6	-6.2	0.2

**Pantalla P57 (Vanos 2 a 2) F'c= 21Mpa**

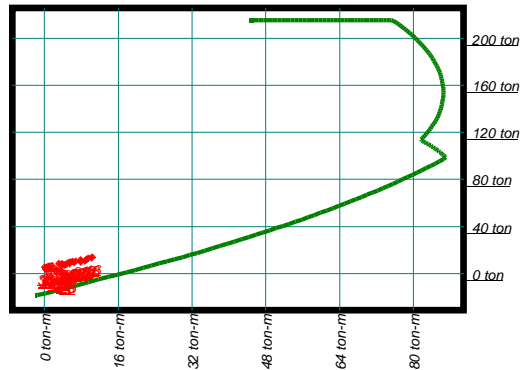
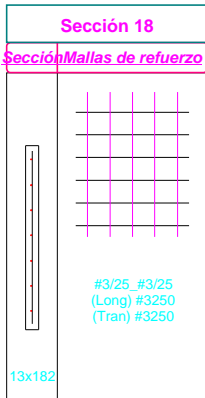
Cortante de Diseño = 0 ton En el vano 2 Combinación 31 [vu=0.00Mpa Øvc=0.18Mpa Øvs=0.71Mpa]  
 Esfuerzo flexión=4.19Mpa En el vano 2 Combinación 12 [Momento =17.1 ton-m Axial =39.2 ton C=0.30m]



N	Mu	Pu	C
1	5.2	21.8	0.2
2	5.8	23.5	0.2
3	0.7	15.0	0.2
4	10.0	28.4	0.2
5	1.5	13.5	0.2
6	9.2	29.9	0.3
7	1.3	7.3	0.2
8	8.0	20.6	0.2
9	0.5	5.8	0.1
10	7.2	22.2	0.2
11	6.1	6.1	0.1
12	17.1	39.2	0.3
13	6.5	4.2	0.1
14	16.7	37.3	0.3
15	4.0	2.1	0.1

**Pantalla P57 (Vanos 3 a 3) F'c= 21Mpa**

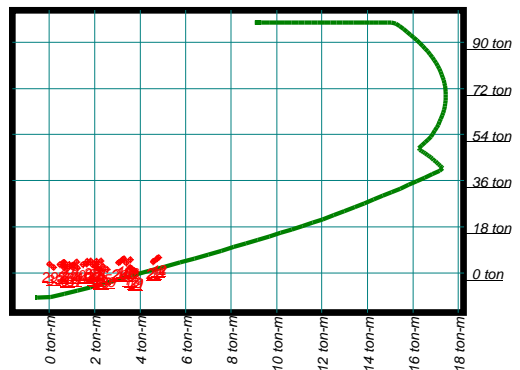
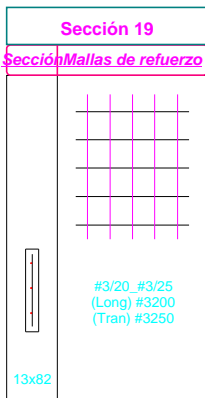
Cortante de Diseño = 1 ton En el vano 3 Combinación 33 [vu=0.00Mpa Øvc=0.18Mpa Øvs=0.71Mpa]  
 Esfuerzo flexión=2.12Mpa En el vano 3 Combinación 16 [Momento =10.4 ton-m Axial =14.1 ton C=0.16m]



N	Mu	Pu	C
1	3.1	8.6	0.1
2	3.8	8.5	0.1
3	1.0	6.2	0.1
4	5.8	10.0	0.1
5	0.6	5.9	0.1
6	6.1	10.4	0.1
7	0.4	3.7	0.1
8	4.4	7.4	0.1
9	0.8	3.3	0.1
10	4.8	7.8	0.1
11	2.5	3.8	0.1
12	9.5	13.1	0.2
13	2.7	3.1	0.1
14	9.2	12.4	0.2
15	3.4	2.9	0.1

**Pantalla P59 (Vanos 1 a 1) F'c= 21Mpa**

Cortante de Diseño = 2.3 ton En el vano 1 Combinación 20 [vu=0.28Mpa Øvc=0.59Mpa Øvs=0.71Mpa]  
 Esfuerzo flexión=4.03Mpa En el vano 1 Combinación 12 [Momento =4.8 ton-m Axial =6.0 ton C=0.08m]

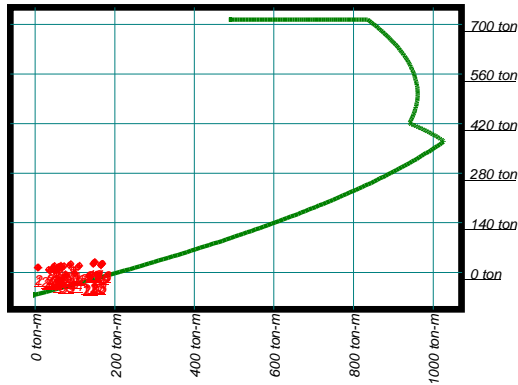
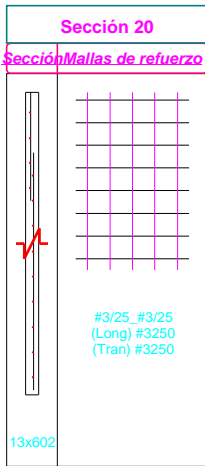


N	Mu	Pu	C
1	0.7	4.1	0.1
2	0.6	4.1	0.1
3	1.1	3.1	0.1
4	2.3	4.7	0.1
5	0.5	3.3	0.1
6	1.7	4.5	0.1
7	1.3	1.9	0.1
8	2.1	3.4	0.1
9	0.7	2.0	0.1
10	1.5	3.3	0.1
11	3.6	2.1	0.1
12	4.8	6.0	0.1
13	3.6	1.8	0.1
14	4.8	5.6	0.1
15	2.0	2.5	0.1



### Pantalla P24 (Vanos 1 a 1) F'c= 21Mpa

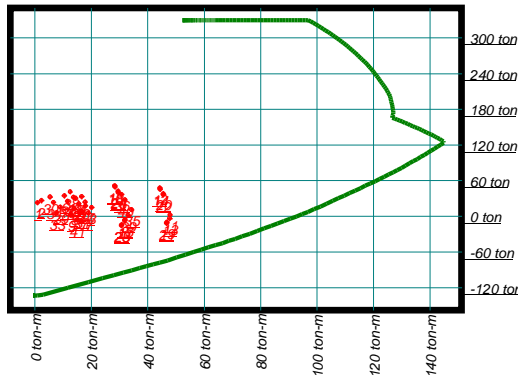
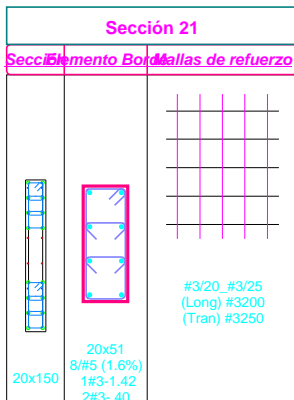
Cortante de Diseño =47.7 ton En el vano 1 Combinación 25 [vu=0.79Mpa Øvc=0.84Mpa Øvs=0.71Mpa]  
 Esfuerzo flexión=2.56Mpa En el vano 1 Combinación 16 [Momento =169.2 ton-m Axial =25.2 ton C=0.43m]



N	Mu	Pu	C
1	5.9	13.7	0.4
2	8.7	13.9	0.4
3	50.1	6.8	0.3
4	64.7	19.4	0.4
5	57.5	8.5	0.3
6	72.1	17.7	0.4
7	53.6	-3.2	0.3
8	61.2	15.1	0.4
9	61.0	4.2	0.3
10	68.6	13.5	0.4
11	135.1	-10.1	0.3
12	150.3	29.4	0.5
13	135.6	-10.5	0.2
14	149.8	28.2	0.4
15	154.1	-5.9	0.3

### Pantalla P69 (Vanos 1 a 1) F'c= 21Mpa

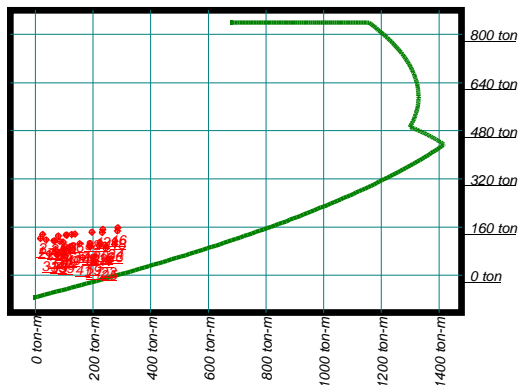
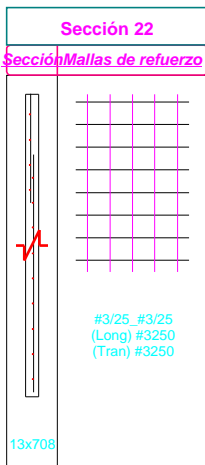
Cortante de Diseño =25.0 ton En el vano 1 Combinación 21 [vu=1.04Mpa Øvc=0.79Mpa Øvs=0.89Mpa]  
 Esfuerzo flexión=7.49Mpa En el vano 1 Combinación 12 [Momento =44.4 ton-m Axial =47.4 ton C=0.37m]



N	Mu	Pu	C
1	0.9	22.8	0.3
2	2.3	26.5	0.3
3	20.2	14.8	0.3
4	16.7	33.0	0.3
5	13.9	13.3	0.3
6	10.4	34.5	0.3
7	19.0	5.6	0.3
8	17.9	23.7	0.3
9	12.8	4.1	0.3
10	11.6	25.3	0.3
11	48.0	2.4	0.3
12	44.4	47.4	0.4
13	47.9	-3.5	0.3
14	44.4	45.5	0.4
15	31.9	-5.8	0.3

### Pantalla P23 (Vanos 1 a 1) F'c= 21Mpa

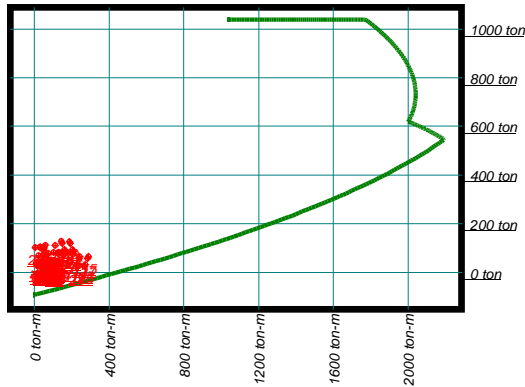
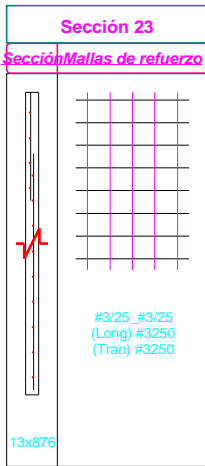
Cortante de Diseño =50.0 ton En el vano 1 Combinación 25 [vu=0.70Mpa Øvc=0.95Mpa Øvs=0.71Mpa]  
 Esfuerzo flexión=4.48Mpa En el vano 1 Combinación 16 [Momento =285.9 ton-m Axial =157.2 ton C=1.16m]



N	Mu	Pu	C
1	17.5	121.3	1.0
2	24.9	134.6	1.0
3	64.1	113.5	0.9
4	106.4	132.7	1.0
5	84.6	111.5	0.9
6	126.9	134.7	1.0
7	74.0	68.4	0.7
8	96.5	87.6	0.8
9	94.5	66.4	0.7
10	117.0	89.6	0.8
11	189.7	104.5	0.9
12	233.5	152.1	1.1
13	191.2	94.1	0.8
14	232.0	141.7	1.1
15	242.1	99.3	0.9

**Pantalla P23 (Vanos 2 a 3) F'c= 21Mpa**

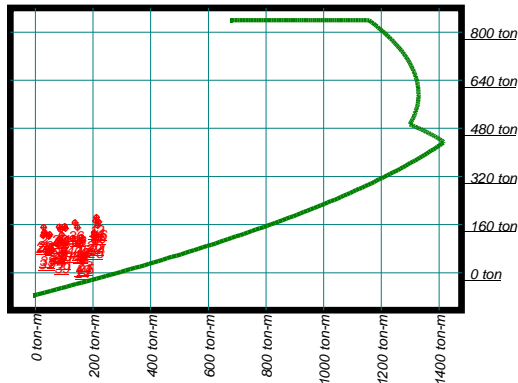
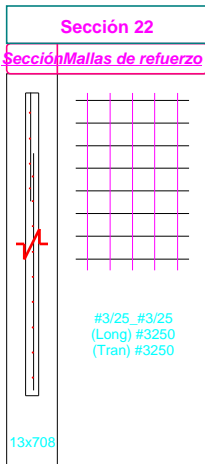
Cortante de Diseño =71.6 ton En el vano 2 Combinación 25 [vu=0.81Mpa Øvc=0.90Mpa Øvs=0.71Mpa]  
 Esfuerzo flexión=2.38Mpa En el vano 2 Combinación 15 [Momento =289.4 ton-m Axial =64.6 ton C=0.78m]



N	Mu	Pu	C
1	49.6	90.6	0.9
2	52.1	99.9	1.0
3	126.5	78.8	0.9
4	29.5	104.2	1.0
5	144.2	79.2	0.9
6	47.1	103.9	1.0
7	109.9	45.5	0.7
8	46.1	70.9	0.8
9	127.5	45.8	0.7
10	63.7	70.6	0.8
11	244.3	63.8	0.8
12	143.0	127.1	1.1
13	240.0	56.0	0.7
14	147.3	119.3	1.0
15	289.4	64.6	0.8

**Pantalla P19A (Vanos 1 a 1) F'c= 21Mpa**

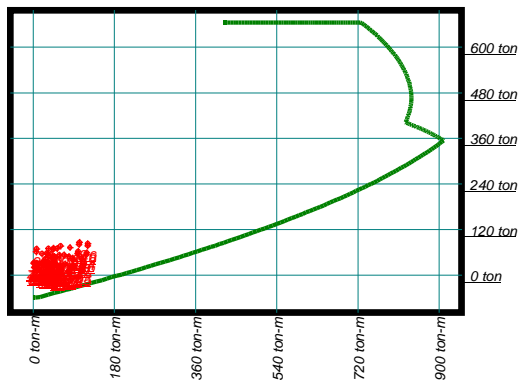
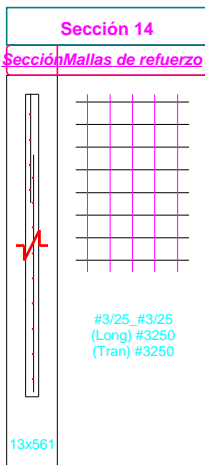
Cortante de Diseño =43.2 ton En el vano 1 Combinación 25 [vu=0.60Mpa Øvc=0.97Mpa Øvs=0.71Mpa]  
 Esfuerzo flexión=4.07Mpa En el vano 1 Combinación 12 [Momento =211.8 ton-m Axial =183.5 ton C=1.28m]



N	Mu	Pu	C
1	31.1	133.8	1.0
2	28.1	150.9	1.1
3	45.9	121.2	1.0
4	101.1	153.5	1.1
5	48.7	126.9	1.0
6	103.9	147.7	1.1
7	53.5	69.8	0.7
8	93.5	102.2	0.9
9	56.3	75.6	0.8
10	96.3	96.4	0.8
11	154.0	102.6	0.9
12	211.8	183.5	1.3
13	156.6	91.1	0.8
14	209.2	172.0	1.2
15	161.2	117.3	1.0

**Pantalla P19A (Vanos 2 a 3) F'c= 21Mpa**

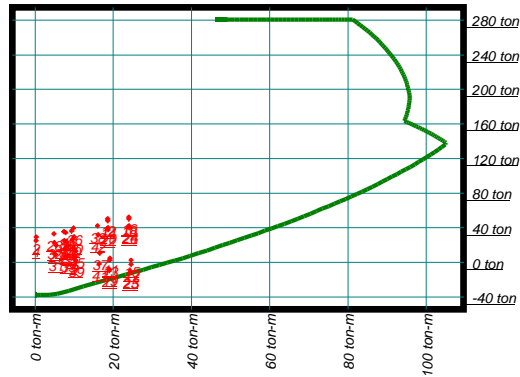
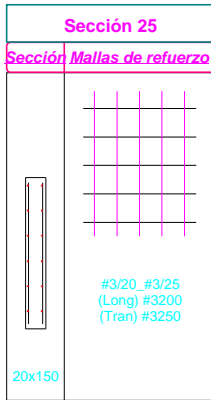
Cortante de Diseño =46.8 ton En el vano 2 Combinación 25 [vu=0.83Mpa Øvc=0.91Mpa Øvs=0.71Mpa]  
 Esfuerzo flexión=3.02Mpa En el vano 2 Combinación 16 [Momento =121.8 ton-m Axial =82.9 ton C=0.72m]



N	Mu	Pu	C
1	6.7	61.2	0.6
2	7.8	69.3	0.6
3	31.4	54.8	0.6
4	45.5	71.2	0.7
5	38.8	56.1	0.6
6	52.9	69.9	0.6
7	34.1	31.1	0.5
8	42.8	47.6	0.5
9	41.5	32.4	0.5
10	50.2	46.3	0.5
11	88.2	45.2	0.5
12	102.8	86.1	0.7
13	88.8	39.9	0.5
14	102.3	80.8	0.7
15	107.1	48.4	0.5

### Pantalla P67 (Vanos 1 a 1) F'c= 21Mpa

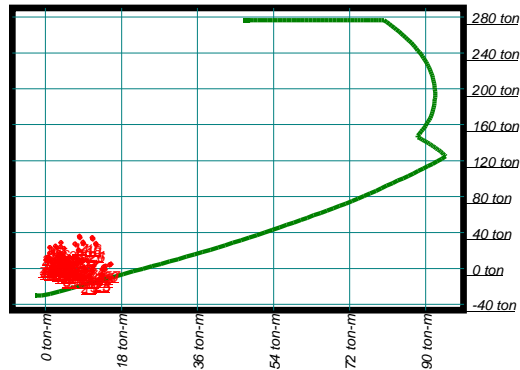
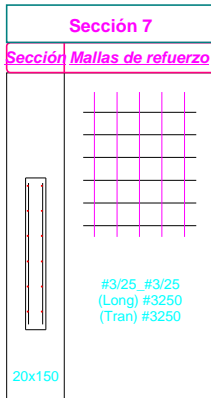
Cortante de Diseño =10.4 ton En el vano 1 Combinación 25 [vu=0.43Mpa Øvc=0.79Mpa Øvs=0.89Mpa]  
 Esfuerzo flexión=4.94Mpa En el vano 1 Combinación 16 [Momento =24.0 ton-m Axial =52.3 ton C=0.28m]



N	Mu	Pu	C
1	0.2	25.0	0.2
2	0.3	29.3	0.2
3	7.9	17.2	0.2
4	7.3	35.5	0.2
5	10.0	16.4	0.2
6	9.4	36.3	0.2
7	7.8	6.9	0.1
8	7.4	25.2	0.2
9	9.9	6.1	0.1
10	9.6	26.0	0.2
11	19.1	4.7	0.1
12	18.6	50.1	0.3
13	19.1	2.5	0.1
14	18.6	48.0	0.3
15	24.5	2.5	0.1

### Pantalla P67 (Vanos 2 a 3) F'c= 21Mpa

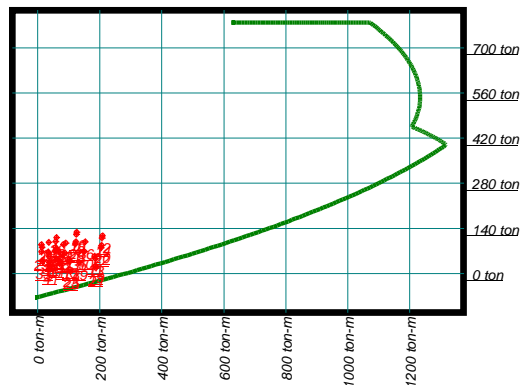
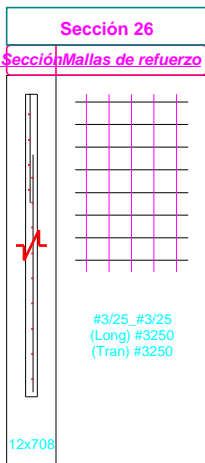
Cortante de Diseño =0 ton En el vano 3 Combinación 30 [vu=0.00Mpa Øvc=0.17Mpa Øvs=0.89Mpa]  
 Esfuerzo flexión=2.63Mpa En el vano 2 Combinación 16 [Momento =11.2 ton-m Axial =34.2 ton C=0.19m]



N	Mu	Pu	C
1	1.0	16.9	0.1
2	1.8	19.4	0.1
3	5.4	10.6	0.1
4	2.4	24.5	0.2
5	6.6	11.1	0.1
6	3.6	23.9	0.2
7	4.6	3.9	0.1
8	3.2	17.8	0.1
9	5.8	4.4	0.1
10	4.4	17.3	0.1
11	11.2	-1.8	0.1
12	8.1	35.7	0.2
13	11.1	-3.0	0.1
14	8.2	34.2	0.2
15	14.2	2.3	0.1

### Pantalla P19 (Vanos 1 a 1) F'c= 21Mpa

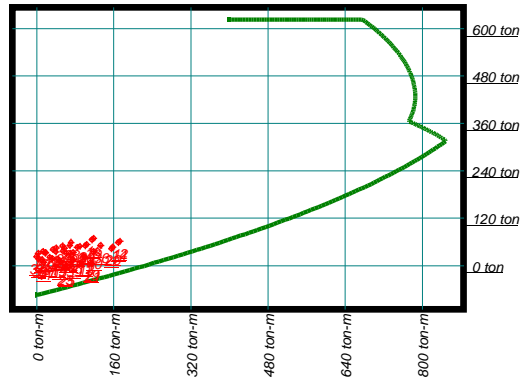
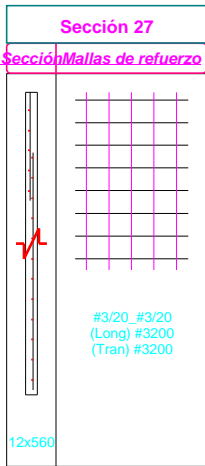
Cortante de Diseño =7 ton En el vano 1 Combinación 29 [vu=0.01Mpa Øvc=0.44Mpa Øvs=0.72Mpa]  
 Esfuerzo flexión=3.35Mpa En el vano 1 Combinación 12 [Momento =209.1 ton-m Axial =116.8 ton C=1.03m]



N	Mu	Pu	C
1	14.0	80.7	0.8
2	11.7	89.2	0.9
3	66.8	68.9	0.8
4	90.4	94.4	0.9
5	34.5	64.5	0.7
6	58.1	98.8	0.9
7	69.6	39.1	0.6
8	87.6	64.7	0.7
9	37.3	34.7	0.6
10	55.3	69.1	0.8
11	184.3	53.5	0.7
12	209.1	116.8	1.0
13	185.5	46.6	0.6
14	207.9	109.9	1.0
15	101.8	42.3	0.6

**Pantalla P19 (Vanos 2 a 2) F'c= 21Mpa**

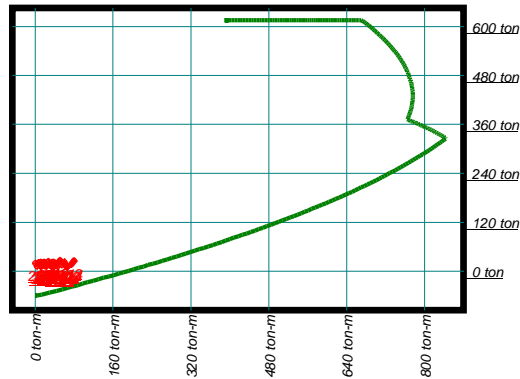
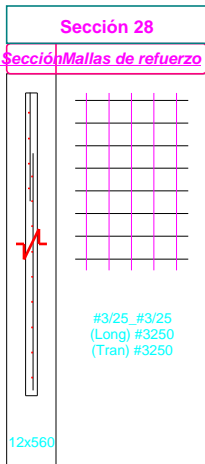
Cortante de Diseño =62.9 ton En el vano 2 Combinación 12 [vu=1.13Mpa Øvc=1.03Mpa Øvs=0.90Mpa]  
 Esfuerzo flexión=3.55Mpa En el vano 2 Combinación 12 [Momento =172.1 ton-m Axial =62.0 ton C=0.72m]



N	Mu	Pu	C
1	33.5	40.5	0.6
2	39.8	45.0	0.6
3	18.3	33.4	0.6
4	89.6	48.8	0.6
5	2.9	30.7	0.5
6	68.4	51.6	0.7
7	32.4	18.4	0.5
8	75.5	33.8	0.6
9	11.2	15.6	0.5
10	54.3	36.5	0.6
11	97.9	23.8	0.5
12	172.1	62.0	0.7
13	100.8	20.3	0.5
14	169.2	58.5	0.7
15	43.8	16.7	0.5

**Pantalla P19 (Vanos 3 a 3) F'c= 21Mpa**

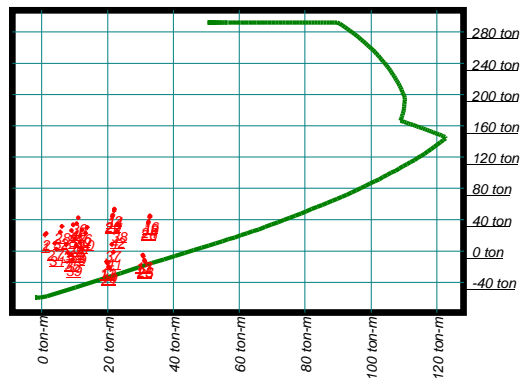
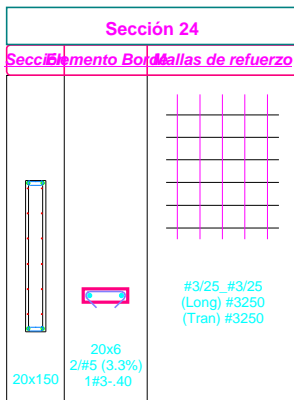
Cortante de Diseño =1 ton En el vano 3 Combinación 27 [vu=0.00Mpa Øvc=0.18Mpa Øvs=0.72Mpa]  
 Esfuerzo flexión=1.61Mpa En el vano 3 Combinación 12 [Momento =80.4 ton-m Axial =25.4 ton C=0.45m]



N	Mu	Pu	C
1	7.2	21.3	0.4
2	12.0	22.4	0.4
3	18.3	19.4	0.4
4	37.9	22.3	0.4
5	6.8	19.0	0.4
6	26.4	22.7	0.4
7	23.4	12.3	0.4
8	32.7	15.2	0.4
9	11.9	11.9	0.4
10	21.2	15.6	0.4
11	60.2	18.2	0.4
12	80.4	25.4	0.4
13	60.8	16.3	0.4
14	79.8	23.6	0.4
15	30.8	17.2	0.4

**Pantalla P66 (Vanos 1 a 1) F'c= 21Mpa**

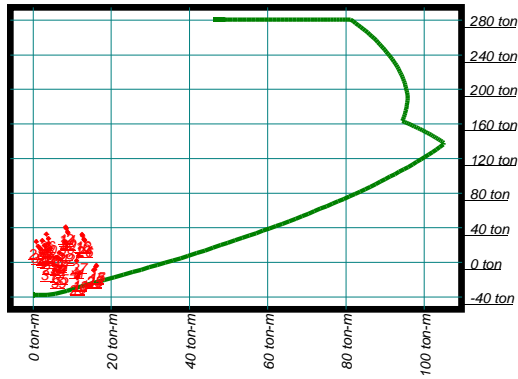
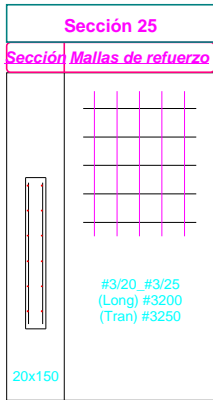
Cortante de Diseño =11.4 ton En el vano 1 Combinación 25 [vu=0.47Mpa Øvc=0.78Mpa Øvs=0.89Mpa]  
 Esfuerzo flexión=5.88Mpa En el vano 1 Combinación 16 [Momento =32.9 ton-m Axial =44.8 ton C=0.23m]



N	Mu	Pu	C
1	0.9	20.6	0.2
2	1.3	22.4	0.2
3	7.4	7.8	0.1
4	9.5	33.3	0.2
5	11.6	11.1	0.1
6	13.8	30.0	0.2
7	7.9	-1.9	0.1
8	9.0	26.0	0.2
9	12.1	3.8	0.1
10	13.3	22.6	0.2
11	19.8	-13.7	0.1
12	22.0	53.3	0.3
13	19.8	-15.1	0.1
14	21.9	51.5	0.3
15	30.6	-5.2	0.1

**Pantalla P66 (Vanos 2 a 2) F'c= 21Mpa**

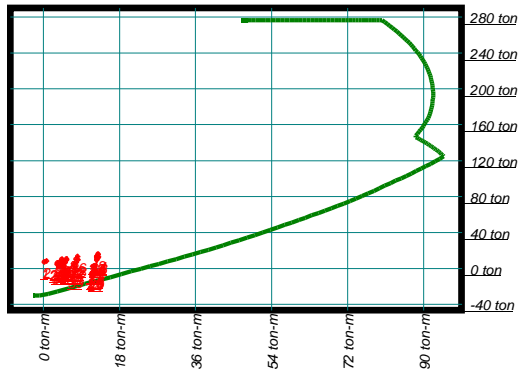
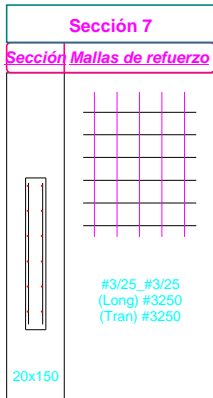
Cortante de Diseño = 3 ton En el vano 2 Combinación 2 [vu=0.01Mpa Øvc=0.47Mpa Øvs=0.89Mpa]  
 Esfuerzo flexión=2.74Mpa En el vano 2 Combinación 16 [Momento =12.5 ton-m Axial =32.0 ton C=0.22m]



N	Mu	Pu	C
1	2.0	15.1	0.2
2	1.8	16.3	0.2
3	5.9	5.1	0.1
4	2.4	25.0	0.2
5	7.5	8.5	0.1
6	4.0	21.7	0.2
7	5.4	-2.5	0.1
8	2.9	19.7	0.2
9	7.0	3.2	0.1
10	4.5	16.3	0.2
11	12.0	-12.3	0.1
12	8.3	40.6	0.2
13	11.8	-13.3	0.1
14	8.5	39.3	0.2
15	16.2	-3.7	0.1

**Pantalla P66 (Vanos 3 a 3) F'c= 21Mpa**

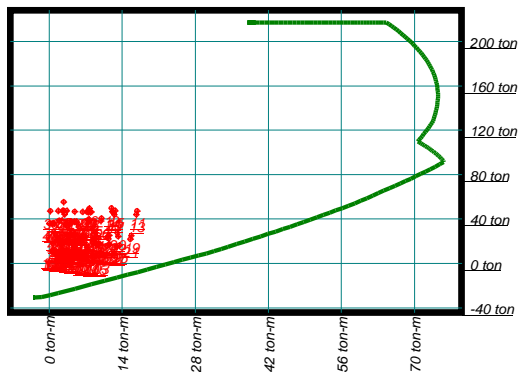
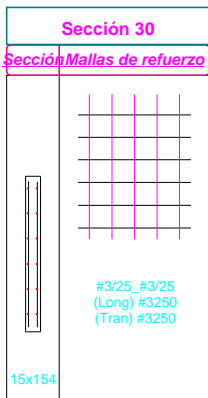
Cortante de Diseño = 2 ton En el vano 3 Combinación 2 [vu=0.01Mpa Øvc=0.91Mpa Øvs=0.89Mpa]  
 Esfuerzo flexión=2.27Mpa En el vano 3 Combinación 12 [Momento =13.0 ton-m Axial =15.9 ton C=0.14m]



N	Mu	Pu	C
1	0.3	7.2	0.1
2	0.7	8.3	0.1
3	4.5	4.2	0.1
4	5.5	10.7	0.1
5	4.5	5.5	0.1
6	5.6	9.5	0.1
7	4.8	1.4	0.1
8	5.2	7.9	0.1
9	4.9	2.6	0.1
10	5.2	6.6	0.1
11	11.9	-3.5	0.1
12	13.0	15.9	0.1
13	11.9	-3.8	0.1
14	13.0	15.3	0.1
15	12.0	2.8	0.1

**Pantalla P1 (Vanos 1 a 3) F'c= 21Mpa**

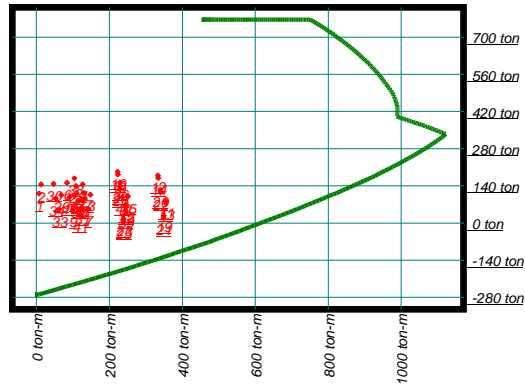
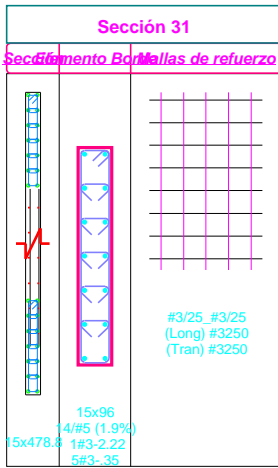
Cortante de Diseño = 1 ton En el vano 1 Combinación 6 [vu=0.01Mpa Øvc=0.20Mpa Øvs=1.19Mpa]  
 Esfuerzo flexión=4.88Mpa En el vano 1 Combinación 11 [Momento =16.9 ton-m Axial =47.1 ton C=0.31m]



N	Mu	Pu	C
1	1.9	38.3	0.3
2	2.8	55.1	0.3
3	8.1	46.2	0.3
4	3.4	47.2	0.3
5	6.5	46.3	0.3
6	1.8	47.2	0.3
7	7.0	24.1	0.2
8	4.5	25.1	0.2
9	5.4	24.2	0.2
10	2.9	25.1	0.2
11	16.9	47.1	0.3
12	12.0	49.6	0.3
13	16.7	43.8	0.3
14	12.1	46.4	0.3
15	12.7	47.3	0.3

**Pantalla P8 (Vanos 1 a 1) F'c= 21Mpa**

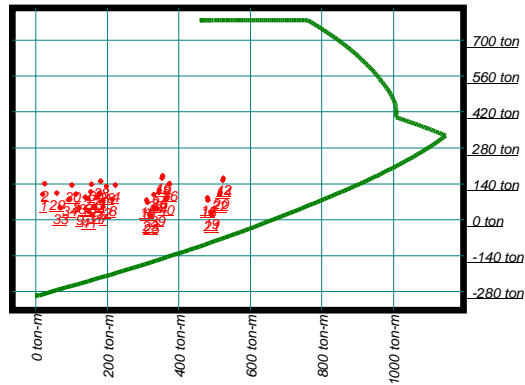
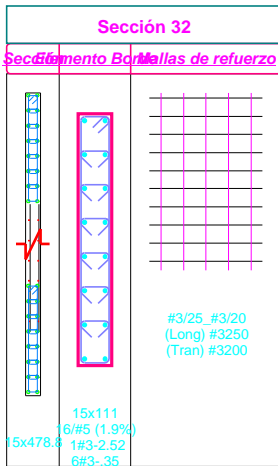
Cortante de Diseño =52.5 ton En el vano 1 Combinación 21 [vu=0.91Mpa Øvc=0.91Mpa Øvs=1.19Mpa]  
 Esfuerzo flexión=8.30Mpa En el vano 1 Combinación 12 [Momento =333.7 ton-m Axial =178.1 ton C=1.21m]



N	Mu	Pu	C
1	7.1	109.9	1.0
2	13.4	144.3	1.1
3	148.5	106.2	1.0
4	127.2	144.8	1.1
5	105.2	100.9	0.9
6	83.8	150.1	1.1
7	142.4	51.4	0.8
8	133.3	90.0	0.9
9	99.1	46.1	0.8
10	89.9	95.3	0.9
11	355.6	82.4	0.9
12	333.7	178.1	1.2
13	355.0	73.0	0.9
14	334.3	168.7	1.2
15	244.9	68.8	0.8

**Pantalla P8 (Vanos 2 a 2) F'c= 21Mpa**

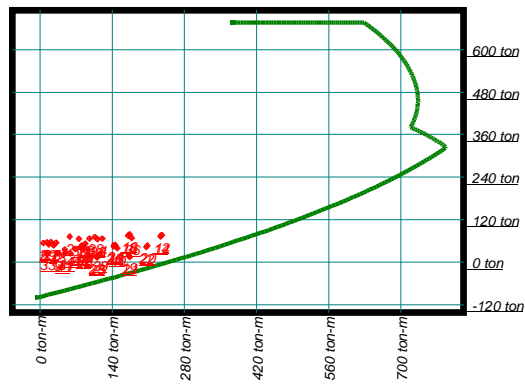
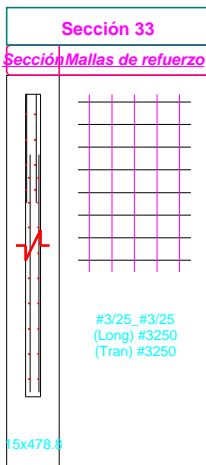
Cortante de Diseño =112.1 ton En el vano 2 Combinación 21 [vu=1.95Mpa Øvc=0.91Mpa Øvs=1.49Mpa]  
 Esfuerzo flexión=11.40Mpa En el vano 2 Combinación 12 [Momento =524.6 ton-m Axial =161.4 ton C=1.19m]



N	Mu	Pu	C
1	19.6	98.8	1.0
2	24.5	139.3	1.1
3	179.1	103.3	1.0
4	222.4	134.3	1.1
5	112.8	99.8	1.0
6	156.1	137.8	1.1
7	188.2	48.1	0.8
8	213.4	79.0	0.9
9	121.8	44.6	0.8
10	147.0	82.5	0.9
11	479.7	84.7	0.9
12	524.6	161.4	1.2
13	481.3	76.2	0.9
14	522.9	152.9	1.2
15	310.1	75.7	0.9

**Pantalla P8 (Vanos 3 a 3) F'c= 21Mpa**

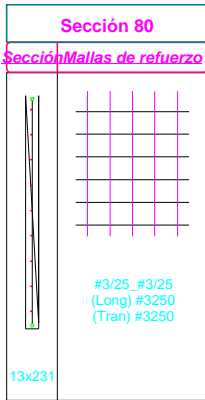
Cortante de Diseño =103.2 ton En el vano 3 Combinación 12 [vu=1.80Mpa Øvc=1.06Mpa Øvs=1.19Mpa]  
 Esfuerzo flexión=5.18Mpa En el vano 3 Combinación 12 [Momento =236.2 ton-m Axial =76.2 ton C=0.70m]



N	Mu	Pu	C
1	26.5	47.4	0.6
2	58.1	71.8	0.7
3	31.2	54.5	0.6
4	120.9	65.8	0.7
5	6.6	53.8	0.6
6	96.3	66.5	0.7
7	59.0	24.9	0.5
8	93.1	36.1	0.5
9	34.4	24.1	0.5
10	68.5	36.8	0.5
11	144.2	48.2	0.6
12	236.2	76.2	0.7
13	146.5	44.1	0.6
14	233.9	72.1	0.7
15	81.3	46.3	0.6

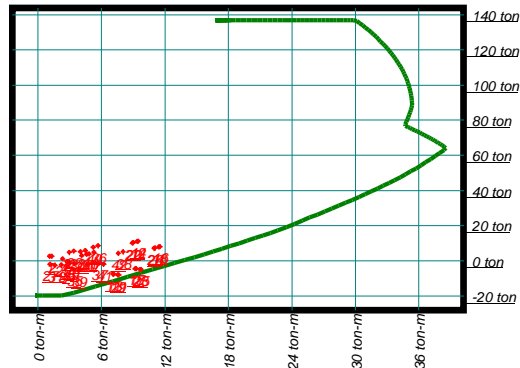
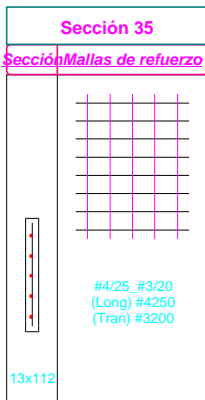
**Pantalla P28 (Vanos 1 a 1) F'c= 21Mpa**

Cortante de Diseño =14.1 ton En el vano 1 Combinación 25 [vu=0.61Mpa Øvc=0.82Mpa Øvs=0.71Mpa]  
 Esfuerzo flexión=4.41Mpa En el vano 1 Combinación 16 [Momento =42.1 ton-m Axial =18.8 ton C=0.00m]



**Pantalla P29 (Vanos 1 a 1) F'c= 21Mpa**

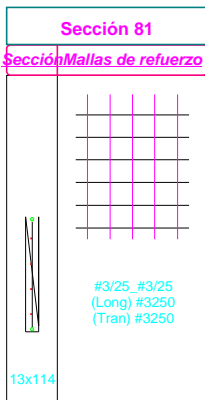
Cortante de Diseño =4.6 ton En el vano 1 Combinación 25 [vu=0.41Mpa Øvc=0.48Mpa Øvs=0.89Mpa]  
 Esfuerzo flexión=4.92Mpa En el vano 1 Combinación 16 [Momento =11.5 ton-m Axial =8.1 ton C=0.13m]



N	Mu	Pu	C
1	1.1	2.6	0.1
2	1.3	2.6	0.1
3	2.2	-2.4	0.1
4	4.5	5.9	0.1
5	3.0	-1.2	0.1
6	5.3	4.7	0.1
7	2.6	-2.8	0.1
8	4.0	5.1	0.1
9	3.5	-1.6	0.1
10	4.8	3.9	0.1
11	7.1	-7.5	0.1
12	9.5	11.1	0.1
13	7.2	-7.6	0.1
14	9.4	10.9	0.1
15	9.2	-4.5	0.1

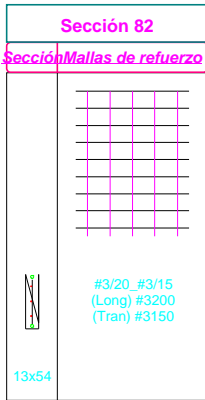
**Pantalla P30 (Vanos 1 a 1) F'c= 21Mpa**

Cortante de Diseño =4.4 ton En el vano 1 Combinación 25 [vu=0.38Mpa Øvc=0.50Mpa Øvs=0.71Mpa]  
 Esfuerzo flexión=4.69Mpa En el vano 1 Combinación 16 [Momento =11.5 ton-m Axial =7.5 ton C=0.00m]



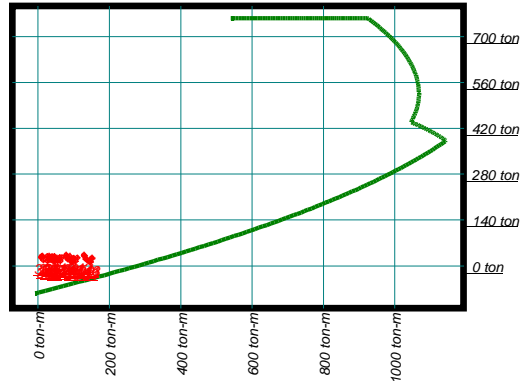
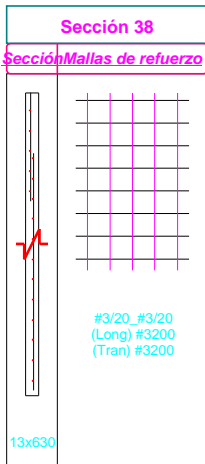
**Pantalla P31 (Vanos 1 a 1) F'c= 21Mpa**

Cortante de Diseño =1.9 ton En el vano 1 Combinación 16 [vu=0.35Mpa Øvc=0.36Mpa Øvs=1.18Mpa]  
 Esfuerzo flexión=6.13Mpa En el vano 1 Combinación 16 [Momento =3.6 ton-m Axial =2.5 ton C=0.00m]



**Pantalla P16 (Vanos 1 a 1) F'c= 21Mpa**

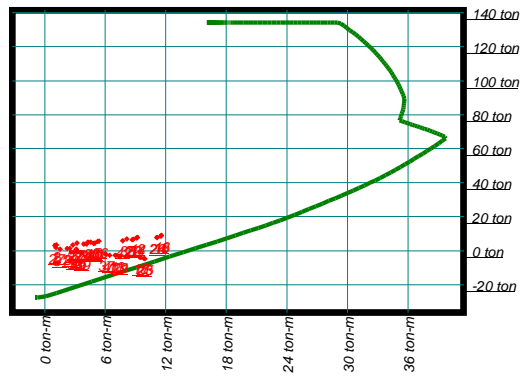
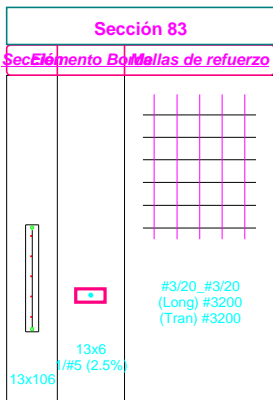
Cortante de Diseño =62.5 ton En el vano 1 Combinación 12 [vu=0.98Mpa Øvc=0.94Mpa Øvs=0.89Mpa]  
 Esfuerzo flexión=2.13Mpa En el vano 1 Combinación 11 [Momento =151.8 ton-m Axial =24.2 ton C=0.52m]



N	Mu	Pu	C
1	9.1	26.6	0.5
2	12.3	30.3	0.5
3	66.9	25.7	0.5
4	45.7	29.2	0.5
5	46.8	25.6	0.5
6	25.6	29.4	0.5
7	62.2	15.3	0.5
8	50.4	18.8	0.5
9	42.0	15.2	0.5
10	30.3	19.0	0.5
11	151.8	24.2	0.5
12	129.8	33.0	0.6
13	151.0	22.0	0.5
14	130.6	30.7	0.5
15	100.4	23.9	0.5

**Pantalla P32 (Vanos 1 a 1) F'c= 21Mpa**

Cortante de Diseño =5.0 ton En el vano 1 Combinación 25 [vu=0.46Mpa Øvc=0.43Mpa Øvs=0.89Mpa]  
 Esfuerzo flexión=5.57Mpa En el vano 1 Combinación 16 [Momento =11.6 ton-m Axial =8.9 ton C=0.11m]

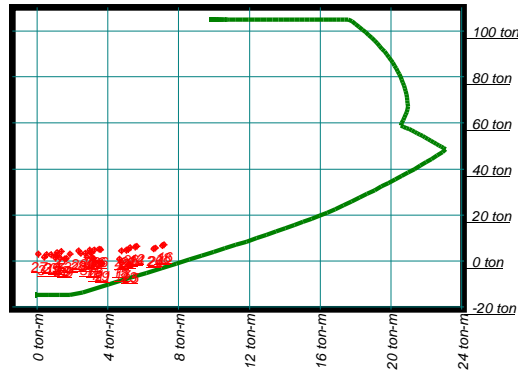
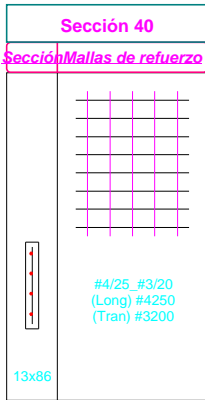


N	Mu	Pu	C
1	1.0	3.2	0.1
2	1.2	3.4	0.1
3	2.2	1.3	0.1
4	4.3	5.0	0.1
5	3.2	0.9	0.1
6	5.3	5.4	0.1
7	2.6	-0.8	0.1
8	3.9	3.9	0.1
9	3.6	-1.2	0.1
10	4.8	4.3	0.1
11	7.0	-2.7	0.1
12	9.2	7.8	0.1
13	7.1	-2.8	0.1
14	9.1	7.5	0.1
15	9.4	-3.8	0.1



**Pantalla P33 (Vanos 1 a 1) F'c= 21Mpa**

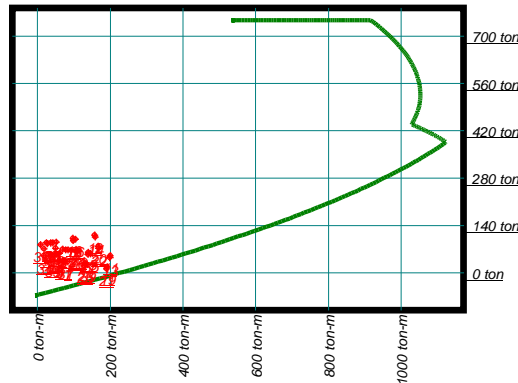
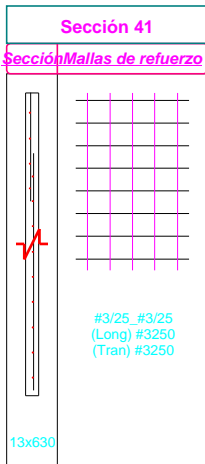
Cortante de Diseño =3.7 ton En el vano 1 Combinación 16 [vu=0.42Mpa Øvc=0.93Mpa Øvs=0.89Mpa]  
 Esfuerzo flexión=5.26Mpa En el vano 1 Combinación 16 [Momento =7.2 ton-m Axial =7.1 ton C=0.11m]



N	Mu	Pu	C
1	1.1	3.7	0.1
2	1.4	4.2	0.1
3	0.5	2.8	0.1
4	3.0	4.8	0.1
5	1.1	2.6	0.1
6	3.6	5.1	0.1
7	1.0	1.4	0.1
8	2.5	3.4	0.1
9	1.6	1.1	0.1
10	3.1	3.6	0.1
11	3.1	1.5	0.1
12	5.6	6.5	0.1
13	3.2	1.1	0.1
14	5.5	6.2	0.1
15	4.7	0.8	0.1

**Pantalla P13 (Vanos 1 a 1) F'c= 21Mpa**

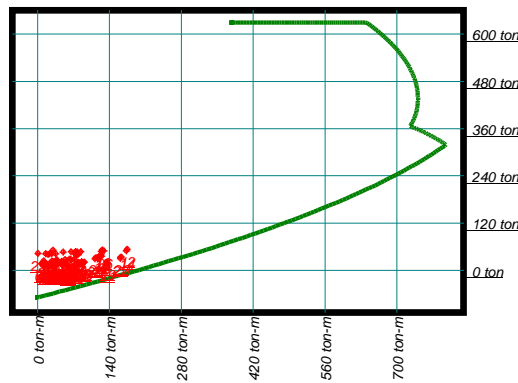
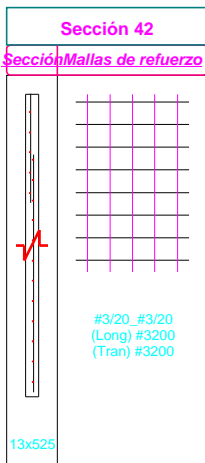
Cortante de Diseño =1.2 ton En el vano 1 Combinación 29 [vu=0.02Mpa Øvc=0.22Mpa Øvs=0.71Mpa]  
 Esfuerzo flexión=3.30Mpa En el vano 1 Combinación 12 [Momento =157.7 ton-m Axial =111.4 ton C=0.89m]



N	Mu	Pu	C
1	17.9	70.4	0.7
2	23.8	88.7	0.8
3	92.2	65.9	0.7
4	51.0	90.2	0.8
5	68.7	69.7	0.7
6	27.4	86.4	0.8
7	83.1	33.2	0.5
8	60.1	57.4	0.6
9	59.5	36.9	0.5
10	36.6	53.6	0.6
11	200.5	50.8	0.6
12	157.7	111.4	0.9
13	199.0	44.7	0.5
14	159.2	105.4	0.9
15	140.3	60.4	0.6

**Pantalla P13 (Vanos 2 a 3) F'c= 21Mpa**

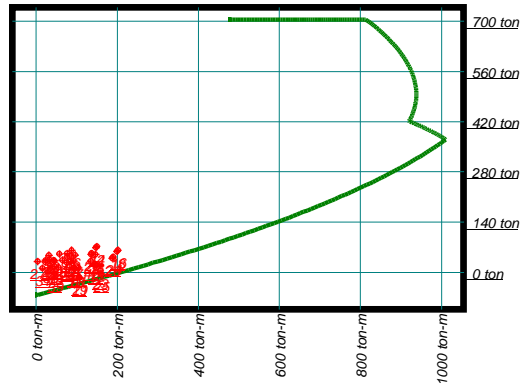
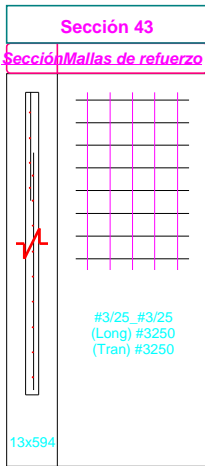
Cortante de Diseño =62.1 ton En el vano 2 Combinación 12 [vu=1.17Mpa Øvc=1.01Mpa Øvs=0.89Mpa]  
 Esfuerzo flexión=3.83Mpa En el vano 2 Combinación 12 [Momento =174.6 ton-m Axial =53.6 ton C=0.60m]



N	Mu	Pu	C
1	19.8	40.5	0.5
2	29.8	51.1	0.6
3	34.5	42.2	0.5
4	84.5	47.8	0.6
5	15.4	42.9	0.5
6	65.4	47.1	0.6
7	46.8	23.3	0.4
8	72.3	28.8	0.5
9	27.7	23.9	0.5
10	53.2	28.1	0.5
11	123.0	39.8	0.5
12	174.6	53.6	0.6
13	124.7	36.3	0.5
14	172.9	50.2	0.6
15	74.2	41.5	0.5

**Pantalla P46 (Vanos 1 a 1) F'c=21Mpa**

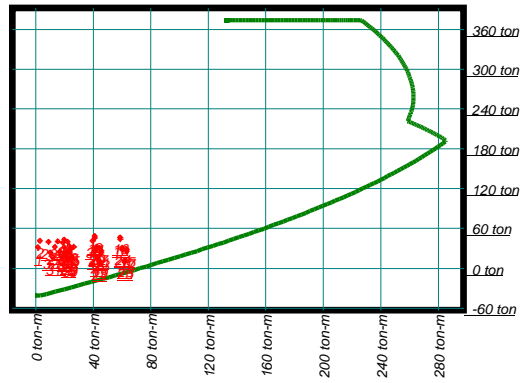
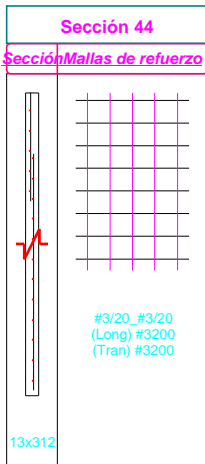
Cortante de Diseño =3.3 ton En el vano 1 Combinación 2 [vu=0.01Mpa Øvc=0.20Mpa Øvs=0.71Mpa]  
 Esfuerzo flexión=3.55Mpa En el vano 1 Combinación 16 [Momento =201.7 ton-m Axial =61.5 ton C=0.61m]



N	Mu	Pu	C
1	23.3	34.2	0.5
2	31.1	47.7	0.6
3	22.2	26.9	0.5
4	76.0	52.7	0.6
5	42.6	33.0	0.5
6	96.4	48.5	0.6
7	34.2	10.1	0.4
8	64.1	33.9	0.5
9	54.6	14.2	0.4
10	84.5	29.8	0.5
11	93.8	12.5	0.4
12	149.6	72.0	0.7
13	95.8	9.6	0.4
14	147.6	69.1	0.7
15	145.9	23.0	0.4

**Pantalla P36 (Vanos 1 a 1) F'c=21Mpa**

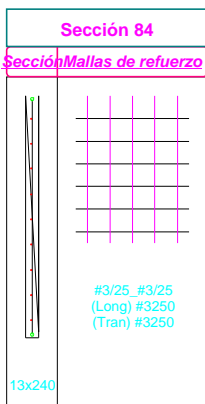
Cortante de Diseño =36.5 ton En el vano 1 Combinación 15 [vu=1.16Mpa Øvc=0.99Mpa Øvs=0.89Mpa]  
 Esfuerzo flexión=4.05Mpa En el vano 1 Combinación 16 [Momento =58.7 ton-m Axial =46.7 ton C=0.43m]



N	Mu	Pu	C
1	1.5	31.6	0.4
2	2.8	41.5	0.4
3	19.8	31.6	0.4
4	15.2	40.5	0.4
5	26.7	32.3	0.4
6	22.1	39.8	0.4
7	18.5	15.8	0.3
8	16.5	24.8	0.3
9	25.4	16.6	0.3
10	23.4	24.0	0.3
11	45.7	26.3	0.3
12	41.0	48.6	0.4
13	45.5	23.6	0.3
14	41.1	45.9	0.4
15	63.3	28.2	0.3

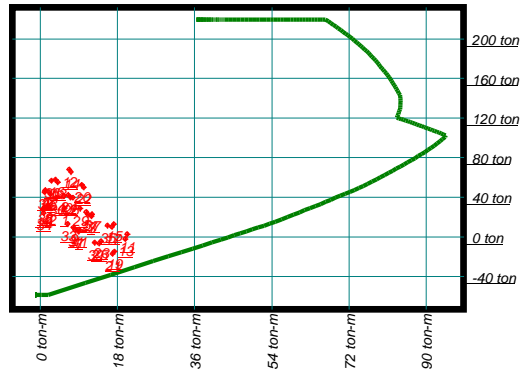
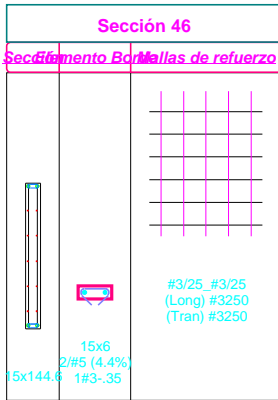
**Pantalla P11 (Vanos 1 a 1) F'c=21Mpa**

Cortante de Diseño =11.9 ton En el vano 1 Combinación 21 [vu=0.49Mpa Øvc=0.80Mpa Øvs=0.71Mpa]  
 Esfuerzo flexión=3.19Mpa En el vano 1 Combinación 12 [Momento =31.8 ton-m Axial =16.7 ton C=0.00m]



**Pantalla P2 (Vanos 1 a 1) F'c= 21Mpa**

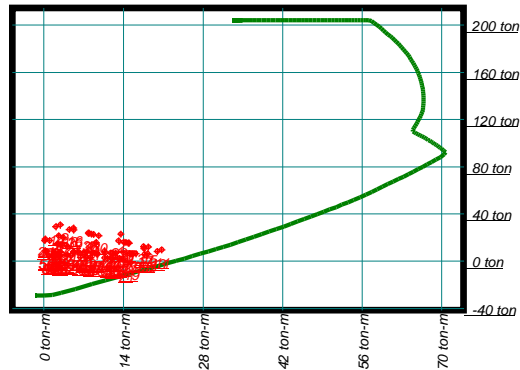
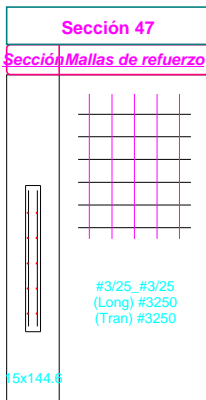
Cortante de Diseño =7.3 ton En el vano 1 Combinación 21 [vu=0.42Mpa Øvc=0.71Mpa Øvs=1.19Mpa]  
 Esfuerzo flexión=4.43Mpa En el vano 1 Combinación 12 [Momento =6.7 ton-m Axial =68.1 ton C=0.39m]



N	Mu	Pu	C
1	5.6	29.0	0.2
2	7.6	39.7	0.3
3	12.0	21.1	0.2
4	1.1	47.2	0.3
5	10.7	25.1	0.2
6	2.4	43.2	0.3
7	9.0	5.6	0.1
8	1.8	31.7	0.2
9	7.8	9.6	0.2
10	0.6	27.7	0.2
11	20.3	2.7	0.1
12	6.7	68.1	0.4
13	19.8	-1.9	0.1
14	7.2	65.6	0.4
15	17.2	12.9	0.2

**Pantalla P2 (Vanos 2 a 3) F'c= 21Mpa**

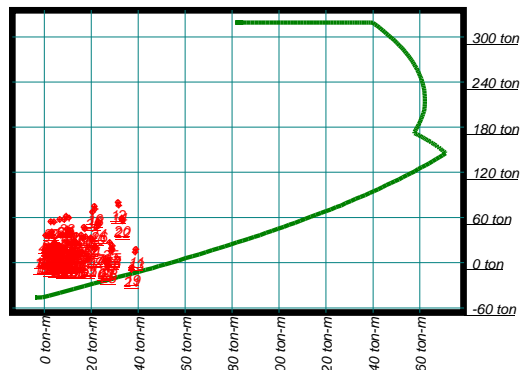
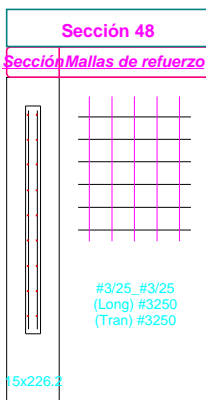
Cortante de Diseño =11.7 ton En el vano 2 Combinación 11 [vu=0.67Mpa Øvc=0.94Mpa Øvs=1.19Mpa]  
 Esfuerzo flexión=4.41Mpa En el vano 2 Combinación 11 [Momento =20.8 ton-m Axial =9.6 ton C=0.15m]



N	Mu	Pu	C
1	9.2	15.9	0.2
2	13.5	22.9	0.2
3	15.0	15.2	0.2
4	7.8	23.6	0.2
5	14.1	16.2	0.2
6	8.8	22.6	0.2
7	9.5	6.0	0.1
8	2.3	14.5	0.2
9	8.6	7.0	0.1
10	3.3	13.4	0.2
11	20.8	9.6	0.2
12	2.9	30.7	0.2
13	20.0	8.2	0.1
14	2.1	29.3	0.2
15	18.4	12.2	0.2

**Pantalla P3 (Vanos 1 a 3) F'c= 21Mpa**

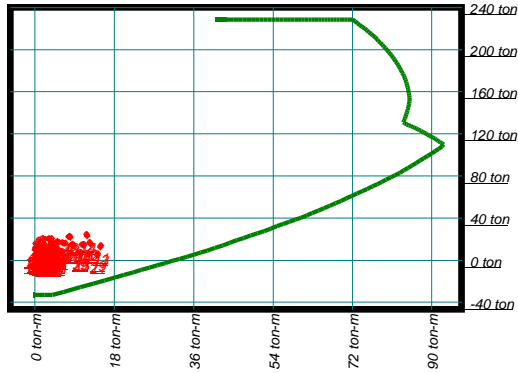
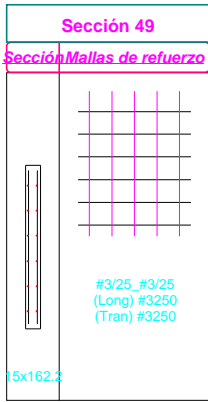
Cortante de Diseño =11.8 ton En el vano 1 Combinación 21 [vu=0.43Mpa Øvc=0.81Mpa Øvs=1.19Mpa]  
 Esfuerzo flexión=4.81Mpa En el vano 1 Combinación 12 [Momento =31.4 ton-m Axial =79.8 ton C=0.51m]



N	Mu	Pu	C
1	3.3	41.0	0.3
2	4.1	54.2	0.4
3	17.7	34.6	0.3
4	10.5	59.5	0.4
5	13.8	36.5	0.3
6	6.5	57.5	0.4
7	16.2	13.9	0.2
8	12.0	38.8	0.3
9	12.3	15.9	0.2
10	8.1	36.8	0.3
11	39.0	17.7	0.3
12	31.4	79.8	0.5
13	38.7	14.2	0.2
14	31.7	76.3	0.5
15	29.0	22.8	0.3

**Pantalla P4 (Vanos 1 a 3) F'c= 21Mpa**

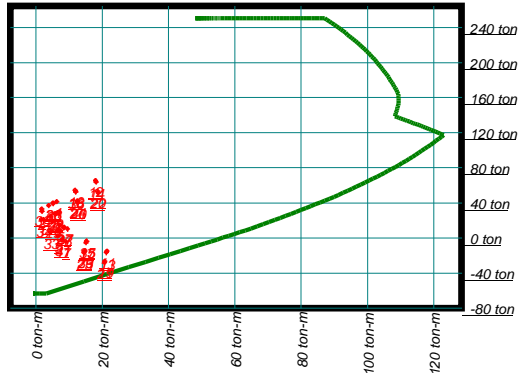
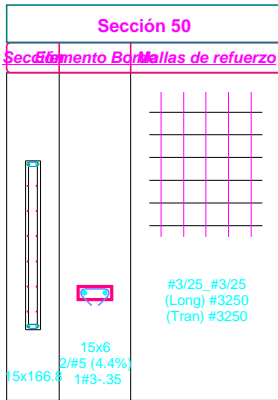
Cortante de Diseño = 0 ton En el vano 2 Combinación 1 [vu=0.00Mpa Øvc=0.17Mpa Øvs=1.19Mpa]  
 Esfuerzo flexión=2.86Mpa En el vano 1 Combinación 11 [Momento =15.0 ton-m Axial =14.1 ton C=0.19m]



N	Mu	Pu	C
1	1.3	17.2	0.2
2	1.8	21.1	0.2
3	6.9	16.6	0.2
4	3.8	20.9	0.2
5	5.4	17.1	0.2
6	2.3	20.3	0.2
7	6.2	8.9	0.2
8	4.5	13.2	0.2
9	4.7	9.5	0.2
10	3.0	12.6	0.2
11	15.0	14.1	0.2
12	11.8	24.8	0.2
13	14.9	12.6	0.2
14	11.9	23.3	0.2
15	11.2	15.6	0.2

**Pantalla P6 (Vanos 1 a 1) F'c= 21Mpa**

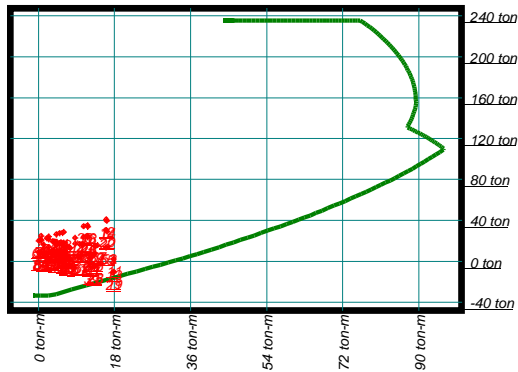
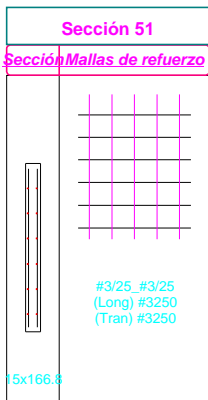
Cortante de Diseño = 8.1 ton En el vano 1 Combinación 21 [vu=0.41Mpa Øvc=0.65Mpa Øvs=1.19Mpa]  
 Esfuerzo flexión=5.20Mpa En el vano 1 Combinación 12 [Momento =18.0 ton-m Axial =65.5 ton C=0.41m]



N	Mu	Pu	C
1	1.6	21.0	0.2
2	1.8	30.3	0.3
3	9.5	10.1	0.2
4	6.2	41.3	0.3
5	7.1	14.5	0.2
6	3.8	36.9	0.3
7	8.9	-4.0	0.1
8	6.8	29.1	0.3
9	6.5	2.3	0.1
10	4.4	24.7	0.2
11	21.4	-15.0	0.1
12	18.0	65.5	0.4
13	21.2	-16.5	0.1
14	18.1	63.7	0.4
15	15.3	-3.9	0.1

**Pantalla P6 (Vanos 2 a 3) F'c= 21Mpa**

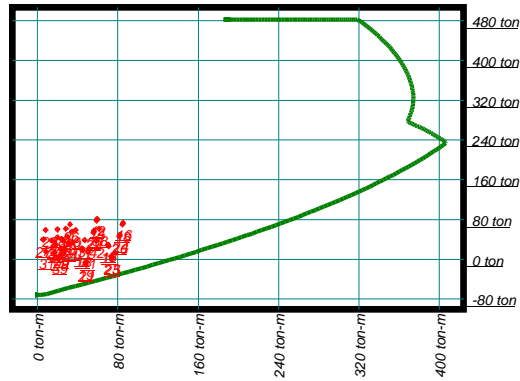
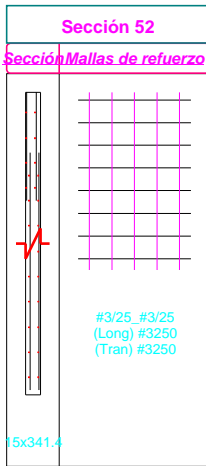
Cortante de Diseño = 9.2 ton En el vano 2 Combinación 21 [vu=0.46Mpa Øvc=0.77Mpa Øvs=1.19Mpa]  
 Esfuerzo flexión=3.94Mpa En el vano 2 Combinación 12 [Momento =16.1 ton-m Axial =40.8 ton C=0.31m]



N	Mu	Pu	C
1	1.2	16.3	0.2
2	0.7	24.8	0.2
3	7.6	13.0	0.2
4	6.0	28.5	0.3
5	5.8	15.2	0.2
6	4.2	26.3	0.2
7	7.6	2.7	0.1
8	6.0	18.2	0.2
9	5.8	4.9	0.2
10	4.2	16.0	0.2
11	17.8	2.0	0.1
12	16.1	40.8	0.3
13	17.7	-1.7	0.1
14	16.2	39.4	0.3
15	13.4	7.7	0.2

**Pantalla P41 (Vanos 1 a 1) F'c= 21Mpa**

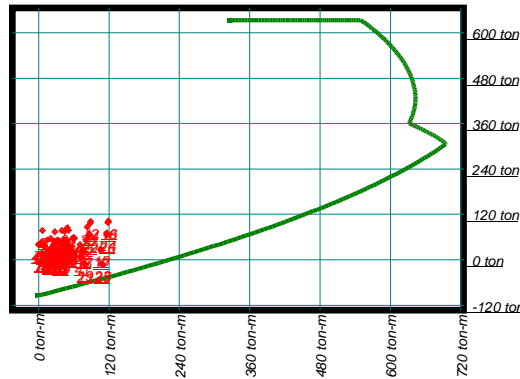
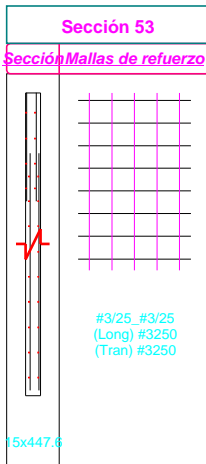
Cortante de Diseño =30.0 ton En el vano 1 Combinación 25 [vu=0.73Mpa Øvc=0.87Mpa Øvs=1.19Mpa]  
 Esfuerzo flexión=4.36Mpa En el vano 1 Combinación 16 [Momento =85.2 ton-m Axial =73.5 ton C=0.59m]



N	Mu	Pu	C
1	6.3	40.5	0.5
2	8.2	59.2	0.5
3	13.9	36.2	0.4
4	28.2	61.9	0.5
5	23.9	41.2	0.5
6	38.3	58.8	0.5
7	17.0	14.2	0.3
8	25.1	37.9	0.4
9	27.0	17.3	0.4
10	35.2	34.8	0.4
11	44.7	22.1	0.4
12	59.6	81.4	0.6
13	45.3	18.6	0.4
14	59.0	77.9	0.6
15	70.4	30.0	0.4

**Pantalla P41 (Vanos 2 a 3) F'c= 21Mpa**

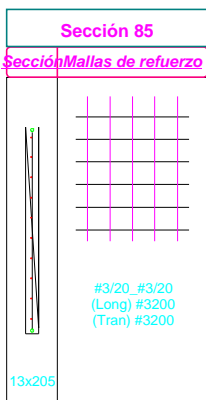
Cortante de Diseño =3 ton En el vano 2 Combinación 27 [vu=0.01Mpa Øvc=0.19Mpa Øvs=1.19Mpa]  
 Esfuerzo flexión=3.90Mpa En el vano 2 Combinación 16 [Momento =119.1 ton-m Axial =101.9 ton C=0.79m]



N	Mu	Pu	C
1	6.3	46.9	0.6
2	6.6	76.7	0.7
3	27.2	48.6	0.6
4	39.5	77.4	0.7
5	38.9	48.2	0.6
6	51.2	77.8	0.7
7	29.3	15.8	0.4
8	37.4	44.6	0.6
9	41.1	15.4	0.4
10	49.1	45.0	0.6
11	76.2	29.2	0.5
12	89.0	100.9	0.8
13	76.8	25.1	0.5
14	88.5	96.9	0.8
15	106.2	28.2	0.5

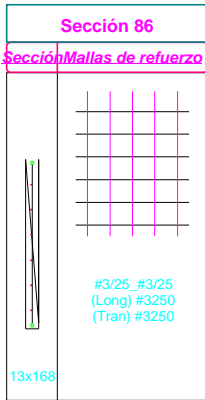
**Pantalla P7 (Vanos 1 a 1) F'c= 21Mpa**

Cortante de Diseño =22.5 ton En el vano 1 Combinación 11 [vu=1.09Mpa Øvc=0.96Mpa Øvs=0.89Mpa]  
 Esfuerzo flexión=5.30Mpa En el vano 1 Combinación 11 [Momento =41.9 ton-m Axial =14.0 ton C=0.00m]



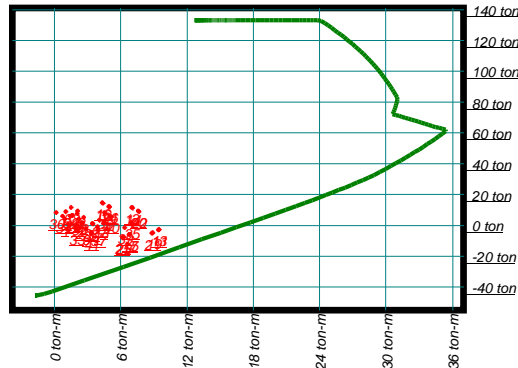
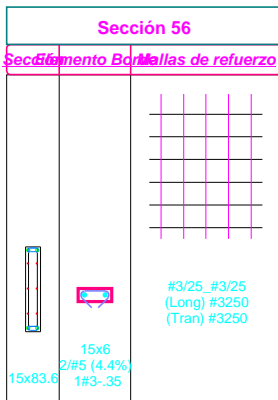
**Pantalla P42 (Vanos 1 a 1) F'c= 21Mpa**

Cortante de Diseño = 8.1 ton En el vano 1 Combinación 25 [vu=0.48Mpa Øvc=0.79Mpa Øvs=0.71Mpa]  
 Esfuerzo flexión=4.31Mpa En el vano 1 Combinación 16 [Momento =20.0 ton-m Axial =19.2 ton C=0.00m]



**Pantalla P10 (Vanos 1 a 1) F'c= 21Mpa**

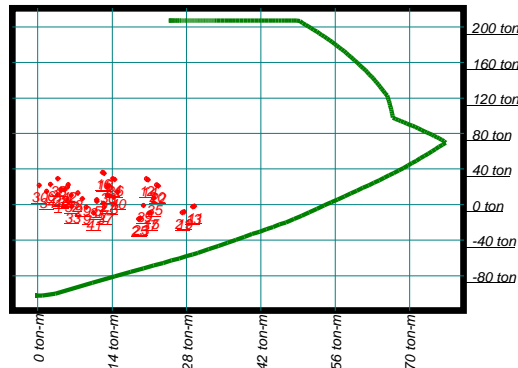
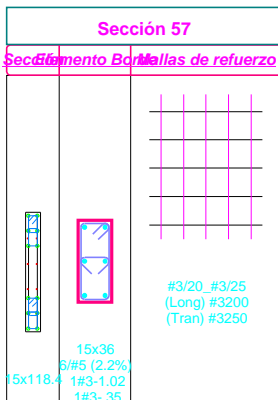
Cortante de Diseño = 5.0 ton En el vano 1 Combinación 11 [vu=0.50Mpa Øvc=0.54Mpa Øvs=1.19Mpa]  
 Esfuerzo flexión=5.22Mpa En el vano 1 Combinación 11 [Momento =9.5 ton-m Axial =-2.7 ton C=0.06m]



N	Mu	Pu	C
1	1.0	4.0	0.1
2	1.4	5.9	0.1
3	4.5	2.4	0.1
4	2.1	7.6	0.1
5	3.5	1.2	0.1
6	1.0	8.8	0.1
7	3.9	-1.0	0.1
8	2.7	5.2	0.1
9	2.9	-2.2	0.1
10	1.6	6.4	0.1
11	9.5	-2.7	0.1
12	7.0	11.6	0.1
13	9.4	-2.9	0.1
14	7.1	11.3	0.1
15	6.8	-5.7	0.1

**Pantalla P9 (Vanos 1 a 1) F'c= 21Mpa**

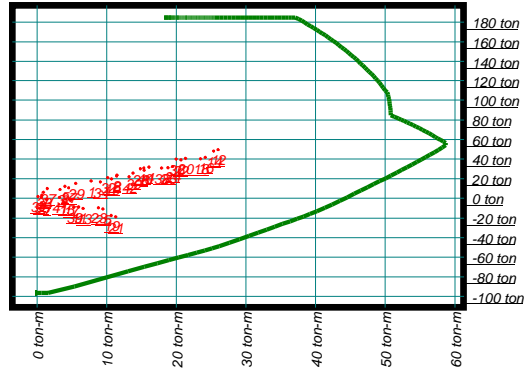
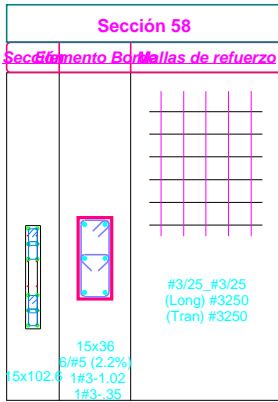
Cortante de Diseño = 16.3 ton En el vano 1 Combinación 11 [vu=1.15Mpa Øvc=0.84Mpa Øvs=1.19Mpa]  
 Esfuerzo flexión=8.33Mpa En el vano 1 Combinación 11 [Momento =29.5 ton-m Axial =-1.7 ton C=0.23m]



N	Mu	Pu	C
1	3.7	11.1	0.3
2	5.1	16.7	0.3
3	14.4	8.3	0.3
4	5.6	19.8	0.3
5	11.1	5.4	0.2
6	2.4	22.6	0.3
7	12.4	1.4	0.2
8	7.6	12.9	0.3
9	9.2	-2.8	0.2
10	4.4	15.8	0.3
11	29.5	-1.7	0.2
12	20.5	28.8	0.3
13	29.2	-2.4	0.2
14	20.8	27.8	0.3
15	21.2	-8.9	0.2

### Pantalla P45 (Vanos 1 a 1) $F'c=21Mpa$

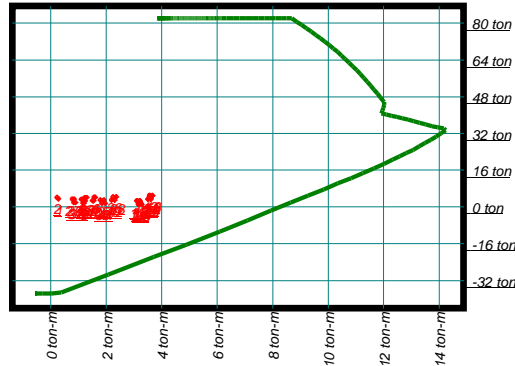
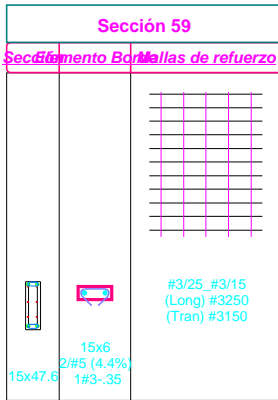
Cortante de Diseño =6.4 ton En el vano 1 Combinación 21 [ $\nu u=0.52Mpa$   $\varnothing vc=0.23Mpa$   $\varnothing vs=1.19Mpa$ ]  
 Esfuerzo flexión=13.10Mpa En el vano 1 Combinación 12 [Momento =26.0 ton-m Axial =49.6 ton C=0.36m]



N	Mu	Pu	C
1	7.8	17.7	0.3
2	11.5	23.6	0.3
3	3.3	9.1	0.2
4	16.1	31.8	0.3
5	4.0	12.2	0.3
6	15.4	28.7	0.3
7	1.4	-1.2	0.2
8	11.4	22.8	0.3
9	0.7	3.1	0.2
10	10.7	19.6	0.3
11	6.0	-8.9	0.2
12	26.0	49.6	0.4
13	6.6	-10.2	0.2
14	25.3	48.1	0.4
15	4.1	-0.9	0.2

### Pantalla P44 (Vanos 1 a 1) $F'c=21Mpa$

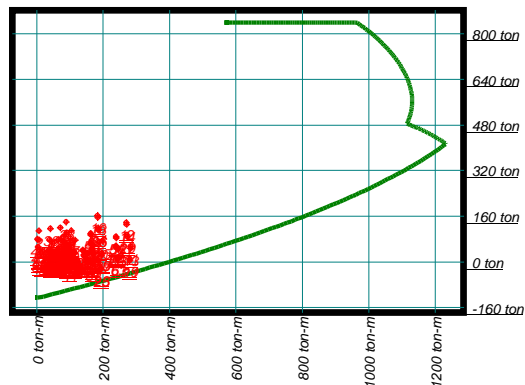
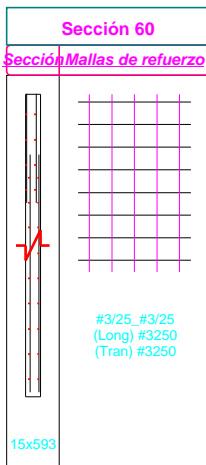
Cortante de Diseño =2.0 ton En el vano 1 Combinación 24 [ $\nu u=0.35Mpa$   $\varnothing vc=0.32Mpa$   $\varnothing vs=1.99Mpa$ ]  
 Esfuerzo flexión=7.19Mpa En el vano 1 Combinación 16 [Momento =3.7 ton-m Axial =4.9 ton C=0.07m]



N	Mu	Pu	C
1	0.3	3.5	0.1
2	0.2	4.1	0.1
3	1.1	3.2	0.1
4	1.6	4.2	0.1
5	1.2	3.2	0.1
6	1.6	4.1	0.1
7	1.2	1.8	0.1
8	1.5	2.7	0.1
9	1.2	1.8	0.1
10	1.6	2.7	0.1
11	3.1	2.7	0.1
12	3.6	5.0	0.1
13	3.1	2.4	0.1
14	3.6	4.7	0.1
15	3.2	2.7	0.1

### Pantalla P5 (Vanos 1 a 3) $F'c=21Mpa$

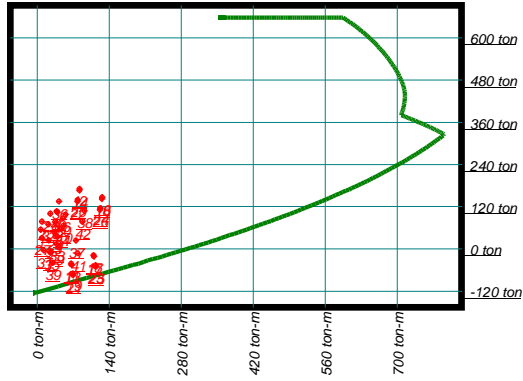
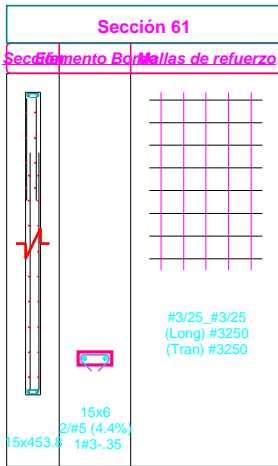
Cortante de Diseño =88.7 ton En el vano 2 Combinación 21 [ $\nu u=1.25Mpa$   $\varnothing vc=0.88Mpa$   $\varnothing vs=1.19Mpa$ ]  
 Esfuerzo flexión=4.62Mpa En el vano 1 Combinación 12 [Momento =269.9 ton-m Axial =137.9 ton C=1.07m]



N	Mu	Pu	C
1	6.7	77.1	0.8
2	6.2	108.8	0.9
3	116.5	75.9	0.8
4	104.5	109.7	0.9
5	82.7	66.4	0.8
6	70.6	119.2	1.0
7	114.8	32.7	0.6
8	106.2	66.5	0.8
9	80.9	23.2	0.6
10	72.3	76.0	0.8
11	282.6	54.3	0.7
12	269.9	137.9	1.1
13	282.0	47.7	0.7
14	270.5	131.3	1.0
15	196.0	30.1	0.6

### Pantalla P43 (Vanos 1 a 1) F'c= 21Mpa

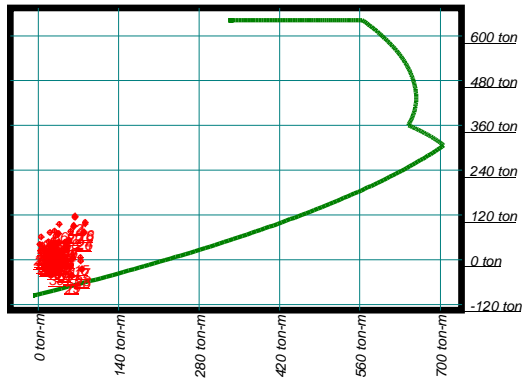
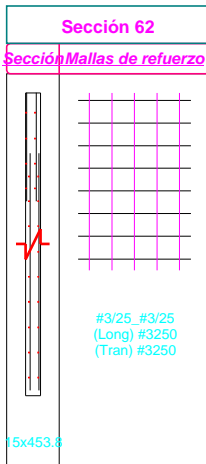
Cortante de Diseño =29.3 ton En el vano 1 Combinación 25 [vu=0.54Mpa Øvc=0.72Mpa Øvs=1.19Mpa]  
 Esfuerzo flexión=4.61Mpa En el vano 1 Combinación 16 [Momento =126.3 ton-m Axial =146.9 ton C=0.97m]



N	Mu	Pu	C
1	6.9	54.9	0.6
2	9.2	77.3	0.7
3	22.2	25.0	0.5
4	38.1	106.9	0.8
5	39.2	34.2	0.5
6	55.1	97.6	0.8
7	25.7	-10.9	0.3
8	34.6	76.2	0.7
9	42.7	3.6	0.4
10	51.6	67.0	0.6
11	66.2	-41.3	0.2
12	82.8	170.5	1.1
13	66.8	-45.3	0.2
14	82.2	165.8	1.0
15	109.8	-17.6	0.3

### Pantalla P43 (Vanos 2 a 3) F'c= 21Mpa

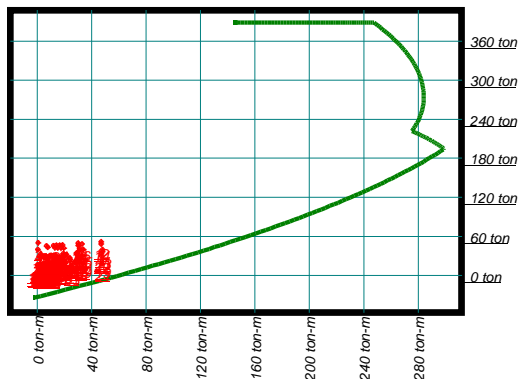
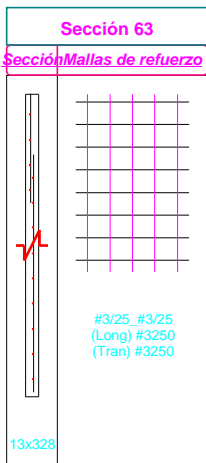
Cortante de Diseño =31.4 ton En el vano 2 Combinación 21 [vu=0.58Mpa Øvc=0.74Mpa Øvs=1.19Mpa]  
 Esfuerzo flexión=3.06Mpa En el vano 2 Combinación 16 [Momento =82.2 ton-m Axial =99.9 ton C=0.77m]



N	Mu	Pu	C
1	2.6	40.9	0.5
2	5.0	61.2	0.6
3	20.4	25.8	0.5
4	28.3	77.0	0.7
5	27.3	32.5	0.5
6	35.3	70.3	0.7
7	22.7	-4.2	0.4
8	26.0	51.9	0.6
9	29.6	7.4	0.4
10	33.0	45.2	0.6
11	56.3	-17.7	0.3
12	64.5	117.1	0.9
13	56.6	-20.5	0.3
14	64.3	113.5	0.8
15	74.0	6.3	0.4

### Pantalla P15 (Vanos 1 a 3) F'c= 21Mpa

Cortante de Diseño =0 ton En el vano 3 Combinación 27 [vu=0.00Mpa Øvc=0.18Mpa Øvs=0.71Mpa]  
 Esfuerzo flexión=3.33Mpa En el vano 1 Combinación 12 [Momento =47.0 ton-m Axial =51.7 ton C=0.43m]

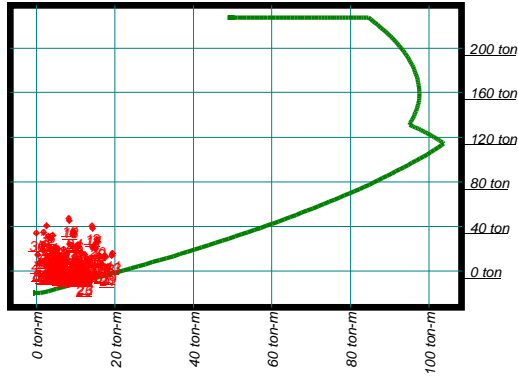
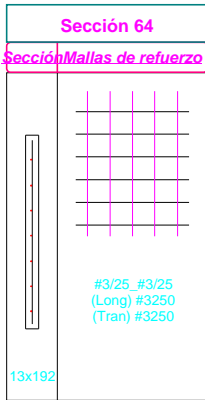


N	Mu	Pu	C
1	0.4	39.9	0.4
2	0.6	50.0	0.4
3	19.5	41.7	0.4
4	18.5	46.5	0.4
5	12.9	42.5	0.4
6	11.9	45.7	0.4
7	19.3	23.3	0.3
8	18.7	28.0	0.3
9	12.7	24.1	0.3
10	12.2	27.2	0.3
11	48.1	39.9	0.4
12	47.0	51.7	0.4
13	48.0	36.5	0.4
14	47.1	48.3	0.4
15	31.2	41.9	0.4



**Pantalla P14 (Vanos 1 a 3) F'c= 21Mpa**

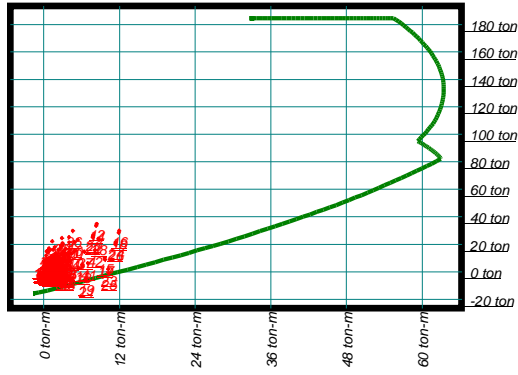
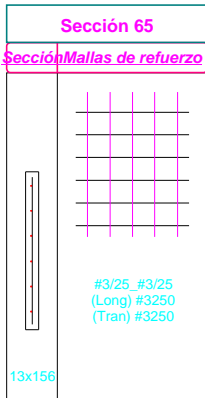
Cortante de Diseño = 1 ton En el vano 1 Combinación 34 [vu=0.00Mpa Øvc=0.19Mpa Øvs=0.71Mpa]  
 Esfuerzo flexión=3.49Mpa En el vano 1 Combinación 12 [Momento =14.2 ton-m Axial =40.3 ton C=0.30m]



N	Mu	Pu	C
1	2.0	23.7	0.2
2	3.0	31.2	0.3
3	9.3	22.2	0.2
4	4.2	32.1	0.3
5	6.9	19.5	0.2
6	1.9	34.7	0.3
7	8.0	10.3	0.2
8	5.4	20.2	0.2
9	5.7	7.6	0.1
10	3.1	22.9	0.2
11	19.5	16.0	0.2
12	14.2	40.3	0.3
13	19.3	13.9	0.2
14	14.4	38.3	0.3
15	13.5	9.1	0.1

**Pantalla P50 (Vanos 1 a 3) F'c= 21Mpa**

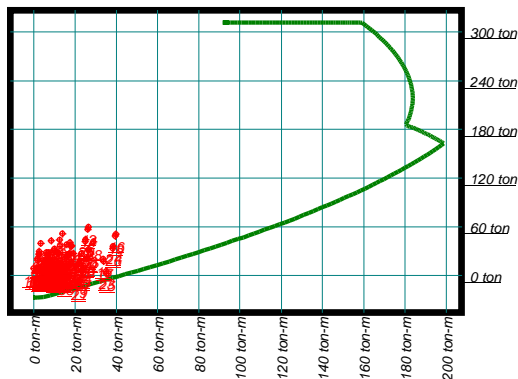
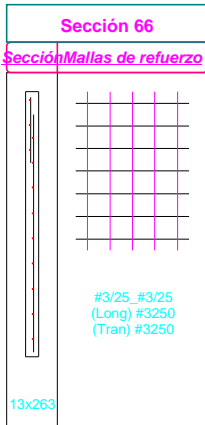
Cortante de Diseño = 0 ton En el vano 3 Combinación 42 [vu=0.00Mpa Øvc=0.18Mpa Øvs=0.71Mpa]  
 Esfuerzo flexión=3.85Mpa En el vano 1 Combinación 16 [Momento =12.0 ton-m Axial =29.8 ton C=0.22m]



N	Mu	Pu	C
1	0.9	16.9	0.2
2	1.3	22.1	0.2
3	1.8	13.3	0.1
4	4.0	25.2	0.2
5	3.2	15.3	0.1
6	5.4	23.2	0.2
7	2.4	4.9	0.1
8	3.5	16.8	0.2
9	3.8	6.9	0.1
10	4.9	14.8	0.1
11	6.1	5.0	0.1
12	8.4	34.9	0.3
13	6.2	3.6	0.1
14	8.3	33.4	0.2
15	9.7	10.1	0.1

**Pantalla P48 (Vanos 1 a 3) F'c= 21Mpa**

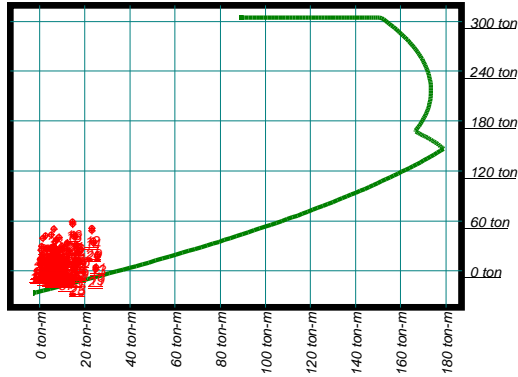
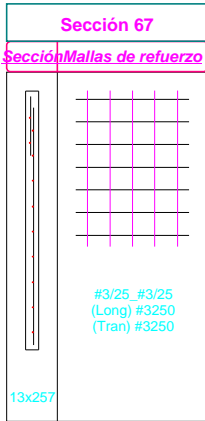
Cortante de Diseño =13.6 ton En el vano 1 Combinación 25 [vu=0.51Mpa Øvc=0.87Mpa Øvs=0.71Mpa]  
 Esfuerzo flexión=4.28Mpa En el vano 1 Combinación 16 [Momento =39.8 ton-m Axial =51.1 ton C=0.39m]



N	Mu	Pu	C
1	2.6	29.9	0.3
2	3.4	39.6	0.3
3	6.5	24.8	0.3
4	12.4	43.9	0.4
5	11.7	28.1	0.3
6	17.6	40.6	0.3
7	7.8	9.7	0.2
8	11.1	28.8	0.3
9	13.0	13.0	0.2
10	16.3	25.5	0.3
11	20.4	11.7	0.2
12	26.5	59.5	0.4
13	20.6	9.1	0.2
14	26.2	57.0	0.4
15	33.7	20.2	0.2

**Pantalla P17 (Vanos 1 a 3) F'c= 21Mpa**

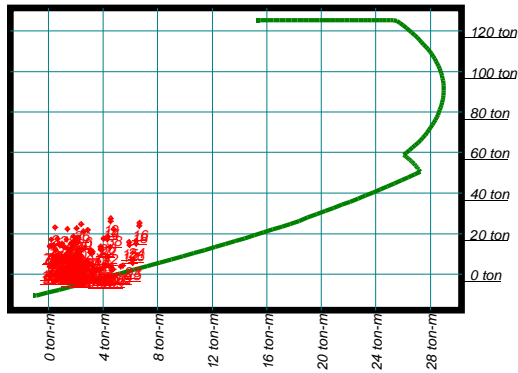
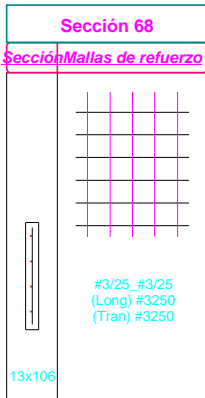
Cortante de Diseño = 1.1 ton En el vano 2 Combinación 1 [vu=0.00Mpa Øvc=0.28Mpa Øvs=0.71Mpa]  
 Esfuerzo flexión=3.25Mpa En el vano 1 Combinación 12 [Momento =23.2 ton-m Axial =50.9 ton C=0.38m]



N	Mu	Pu	C
1	0.9	29.3	0.3
2	1.5	39.0	0.3
3	11.0	27.4	0.3
4	8.6	40.2	0.3
5	7.6	24.4	0.3
6	5.2	43.2	0.3
7	10.4	12.4	0.2
8	9.2	25.2	0.3
9	7.0	9.4	0.2
10	5.8	28.3	0.3
11	25.7	19.2	0.2
12	23.2	50.9	0.4
13	25.6	16.7	0.2
14	23.3	48.3	0.4
15	17.1	11.5	0.2

**Pantalla P49 (Vanos 1 a 3) F'c= 21Mpa**

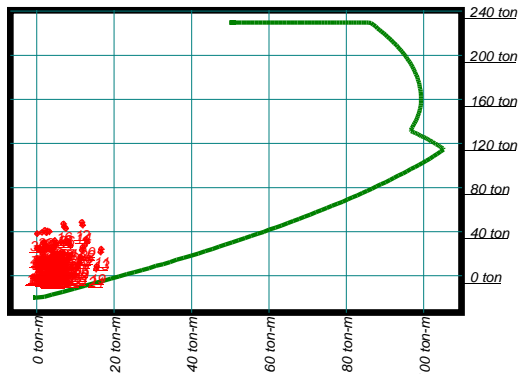
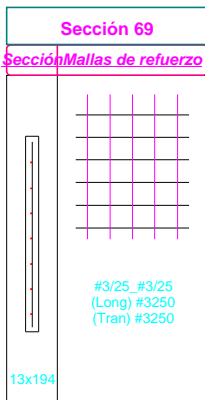
Cortante de Diseño =3.0 ton En el vano 1 Combinación 25 [vu=0.28Mpa Øvc=0.62Mpa Øvs=0.71Mpa]  
 Esfuerzo flexión=4.71Mpa En el vano 1 Combinación 16 [Momento =6.7 ton-m Axial =25.4 ton C=0.18m]



N	Mu	Pu	C
1	0.2	17.1	0.1
2	0.5	23.0	0.2
3	1.3	17.1	0.1
4	2.1	22.7	0.2
5	2.1	18.0	0.1
6	2.9	21.8	0.2
7	1.6	8.2	0.1
8	1.8	13.8	0.1
9	2.4	9.1	0.1
10	2.6	12.9	0.1
11	3.8	13.7	0.1
12	4.6	27.6	0.2
13	3.8	12.3	0.1
14	4.5	26.1	0.2
15	5.9	15.9	0.1

**Pantalla P12 (Vanos 1 a 3) F'c= 21Mpa**

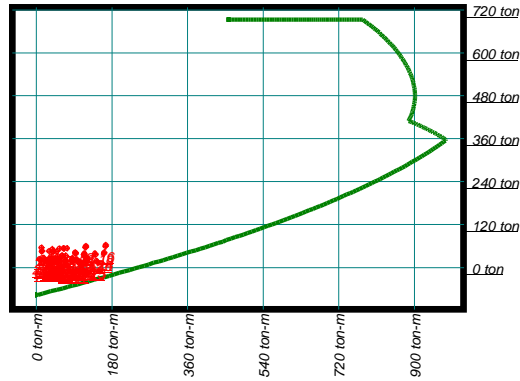
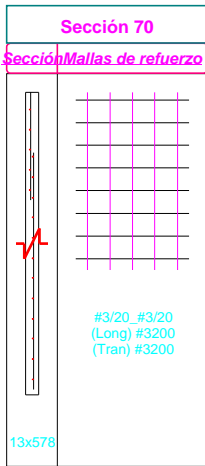
Cortante de Diseño =0 ton En el vano 3 Combinación 24 [vu=0.00Mpa Øvc=0.17Mpa Øvs=0.71Mpa]  
 Esfuerzo flexión=3.48Mpa En el vano 1 Combinación 12 [Momento =11.7 ton-m Axial =48.6 ton C=0.34m]



N	Mu	Pu	C
1	1.9	30.4	0.3
2	2.9	40.5	0.3
3	8.1	30.2	0.2
4	3.3	40.0	0.3
5	6.2	30.9	0.3
6	1.4	39.4	0.3
7	6.9	14.7	0.2
8	4.5	24.4	0.2
9	5.0	15.3	0.2
10	2.6	23.8	0.2
11	16.7	24.3	0.2
12	11.7	48.6	0.3
13	16.6	21.7	0.2
14	11.9	46.0	0.3
15	11.9	25.8	0.2

**Pantalla P35 (Vanos 1 a 2) F'c= 21Mpa**

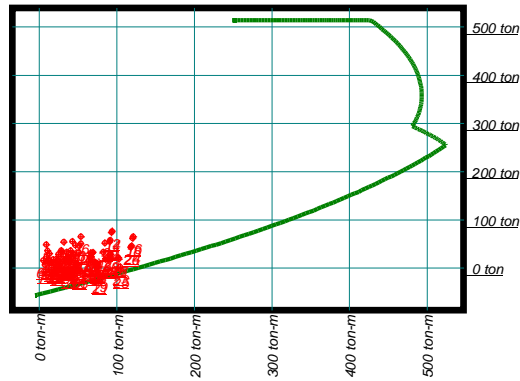
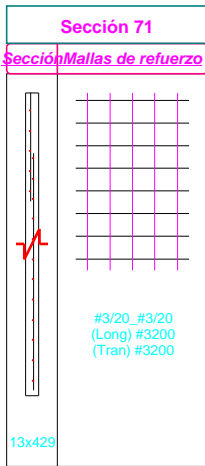
Cortante de Diseño =75.4 ton En el vano 1 Combinación 26 [vu=1.29Mpa Øvc=0.96Mpa Øvs=0.89Mpa]  
 Esfuerzo flexión=3.23Mpa En el vano 1 Combinación 16 [Momento =165.7 ton-m Axial =63.0 ton C=0.68m]



N	Mu	Pu	C
1	13.3	45.3	0.6
2	12.7	55.7	0.6
3	30.4	45.8	0.6
4	54.9	52.9	0.6
5	49.0	44.7	0.6
6	73.4	54.0	0.6
7	34.1	25.5	0.5
8	51.2	32.7	0.5
9	52.7	24.4	0.5
10	69.7	33.8	0.5
11	92.8	42.4	0.6
12	118.4	60.1	0.7
13	94.0	38.5	0.6
14	117.2	56.3	0.6
15	140.2	39.6	0.6

**Pantalla P37 (Vanos 1 a 2) F'c= 21Mpa**

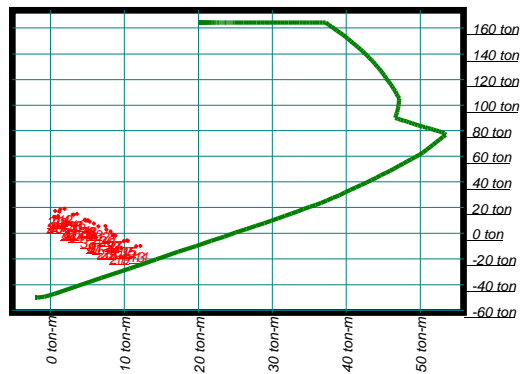
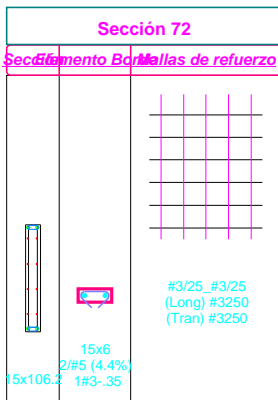
Cortante de Diseño =51.5 ton En el vano 1 Combinación 25 [vu=1.19Mpa Øvc=0.85Mpa Øvs=0.89Mpa]  
 Esfuerzo flexión=4.35Mpa En el vano 1 Combinación 16 [Momento =121.5 ton-m Axial =65.2 ton C=0.59m]



N	Mu	Pu	C
1	10.7	36.0	0.4
2	9.2	48.7	0.5
3	24.8	28.7	0.4
4	43.3	55.3	0.5
5	35.5	33.2	0.4
6	54.0	50.7	0.5
7	27.2	9.8	0.3
8	40.9	36.4	0.5
9	37.9	14.4	0.3
10	51.6	31.9	0.4
11	74.8	10.2	0.3
12	94.1	76.8	0.6
13	75.7	7.1	0.3
14	93.2	73.7	0.6
15	102.1	21.9	0.4

**Pantalla P40 (Vanos 1 a 1) F'c= 21Mpa**

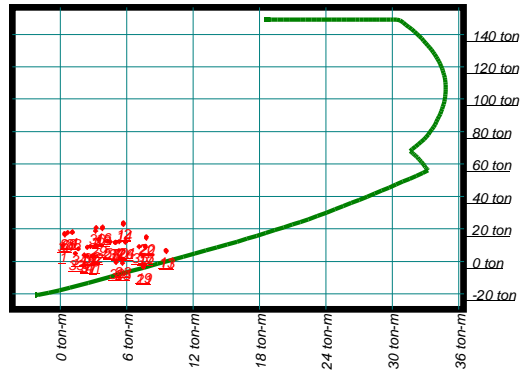
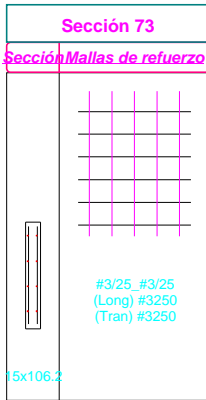
Cortante de Diseño =5.6 ton En el vano 1 Combinación 11 [vu=0.44Mpa Øvc=0.74Mpa Øvs=1.19Mpa]  
 Esfuerzo flexión=3.70Mpa En el vano 1 Combinación 11 [Momento =12.2 ton-m Axial =-9.8 ton C=0.06m]



N	Mu	Pu	C
1	6.5	5.3	0.1
2	7.5	5.5	0.1
3	8.8	-1.8	0.1
4	4.7	10.6	0.1
5	8.1	1.3	0.1
6	5.4	9.0	0.1
7	6.2	-3.2	0.1
8	2.1	8.9	0.1
9	5.6	-1.6	0.1
10	2.8	7.3	0.1
11	12.2	-9.8	0.1
12	1.9	19.0	0.2
13	11.6	-10.1	0.0
14	1.4	18.5	0.1
15	10.5	-5.8	0.1

**Pantalla P40 (Vanos 2 a 2) F'c= 21Mpa**

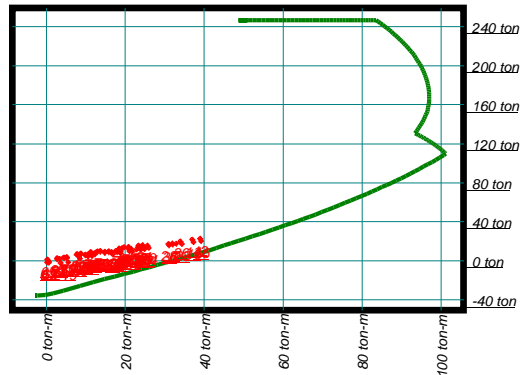
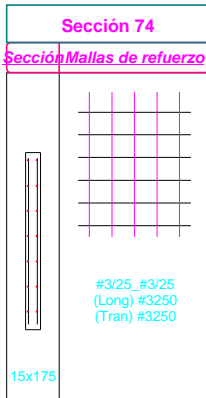
Cortante de Diseño =4.5 ton En el vano 2 Combinación 21 [vu=0.36Mpa Øvc=0.59Mpa Øvs=1.19Mpa]  
 Esfuerzo flexión=3.82Mpa En el vano 2 Combinación 11 [Momento =9.6 ton-m Axial =6.8 ton C=0.10m]



N	Mu	Pu	C
1	0.2	9.8	0.1
2	3.2	18.7	0.1
3	5.0	11.5	0.1
4	1.1	18.2	0.1
5	4.3	12.5	0.1
6	0.4	17.2	0.1
7	2.9	2.9	0.1
8	3.2	9.6	0.1
9	2.2	3.9	0.1
10	2.5	8.6	0.1
11	9.6	6.8	0.1
12	5.7	23.7	0.2
13	9.6	6.0	0.1
14	5.7	22.9	0.2
15	7.7	9.4	0.1

**Pantalla P39 (Vanos 1 a 2) F'c= 21Mpa**

Cortante de Diseño =20.9 ton En el vano 1 Combinación 16 [vu=1.00Mpa Øvc=1.00Mpa Øvs=1.19Mpa]  
 Esfuerzo flexión=5.95Mpa En el vano 1 Combinación 12 [Momento =39.0 ton-m Axial =22.6 ton C=0.22m]



N	Mu	Pu	C
1	22.9	11.7	0.2
2	33.0	17.4	0.2
3	23.9	11.6	0.2
4	32.0	17.6	0.2
5	23.8	12.5	0.2
6	32.1	16.7	0.2
7	10.7	4.5	0.2
8	18.7	10.5	0.2
9	10.5	5.4	0.2
10	18.9	9.6	0.2
11	18.9	7.5	0.2
12	39.0	22.6	0.2
13	16.9	6.5	0.2
14	37.0	21.6	0.2
15	18.6	10.0	0.2